

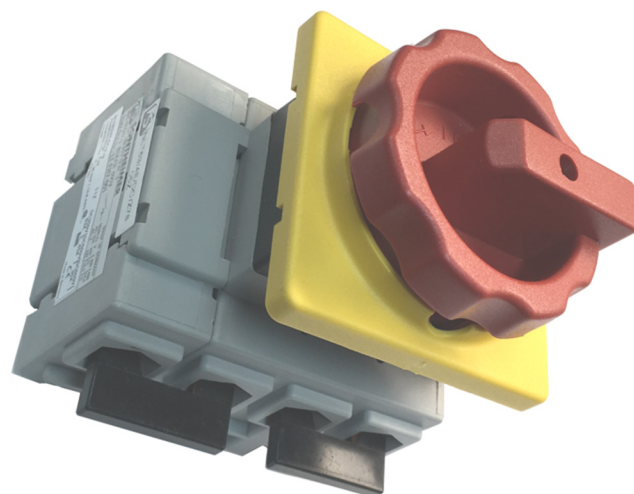
## DC Disconnect Switches

Two models of disconnect switches designed and approved for interrupting loads in Direct Current (DC).

These switches are equipped with a special heavy-duty cam system, which provides fast, secure snap action opening of the contacts. Moreover, each pole is interrupted via two contacts in series. Jumpers are already installed.

### Features and Specifications:

- **Mounting:** door mounted (4+1 hole). DIN-Rail mounting available upon request
- **Handle:** Lockable knurled-type (Z33), red/yellow. Black/grey available upon request
- **Ingress protection:** IP65 (front) if mounted with optional Z1/D1 sealing gasket
- **Operating temperature:** -20 to 50°C (peaks 80°C)



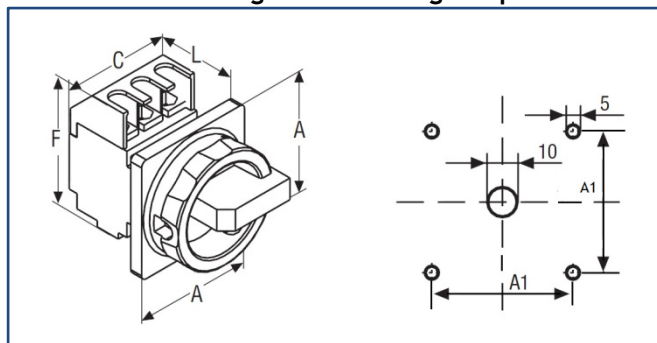
These models are CSA and cCSAus certified. Ratings are as indicated in the table below.

### DC Disconnect Switches (Order by Part No.)

Part No.	Description	CSA Rating 600V DC	CSA Rating 500 VDC	CSA Rating 350V DC
LBS-NLT40/4E/DC/Z78	Disconnect switch for DC applications, 20A 600V DC	20A	28A	40A
LBS-NLT63/4E/DC/Z78	Disconnect switch for DC applications, 30A 600V DC	30A	45A	63A

*Information subject to change without notice*

### Dimensional drawing and mounting template



### Dimensions

Model	A	A1	C - 4 Pole	F	L
LBS-NLT40	66	48	61	72	50
LBS-NLT63	66	48	80	73	59

*Information subject to change without notice - All dimensions in mm*