



ELECTRICAL COMPONENTS

Fuses and Fuse Holders

- Touch-Proof Modular Fuse Holders
 - Open Fuse Holders
 - MIDGET & CC Fuses
 - Photovoltaic Fuses
 - 5x20 Fuses
- Dummy/Neutral Fuses



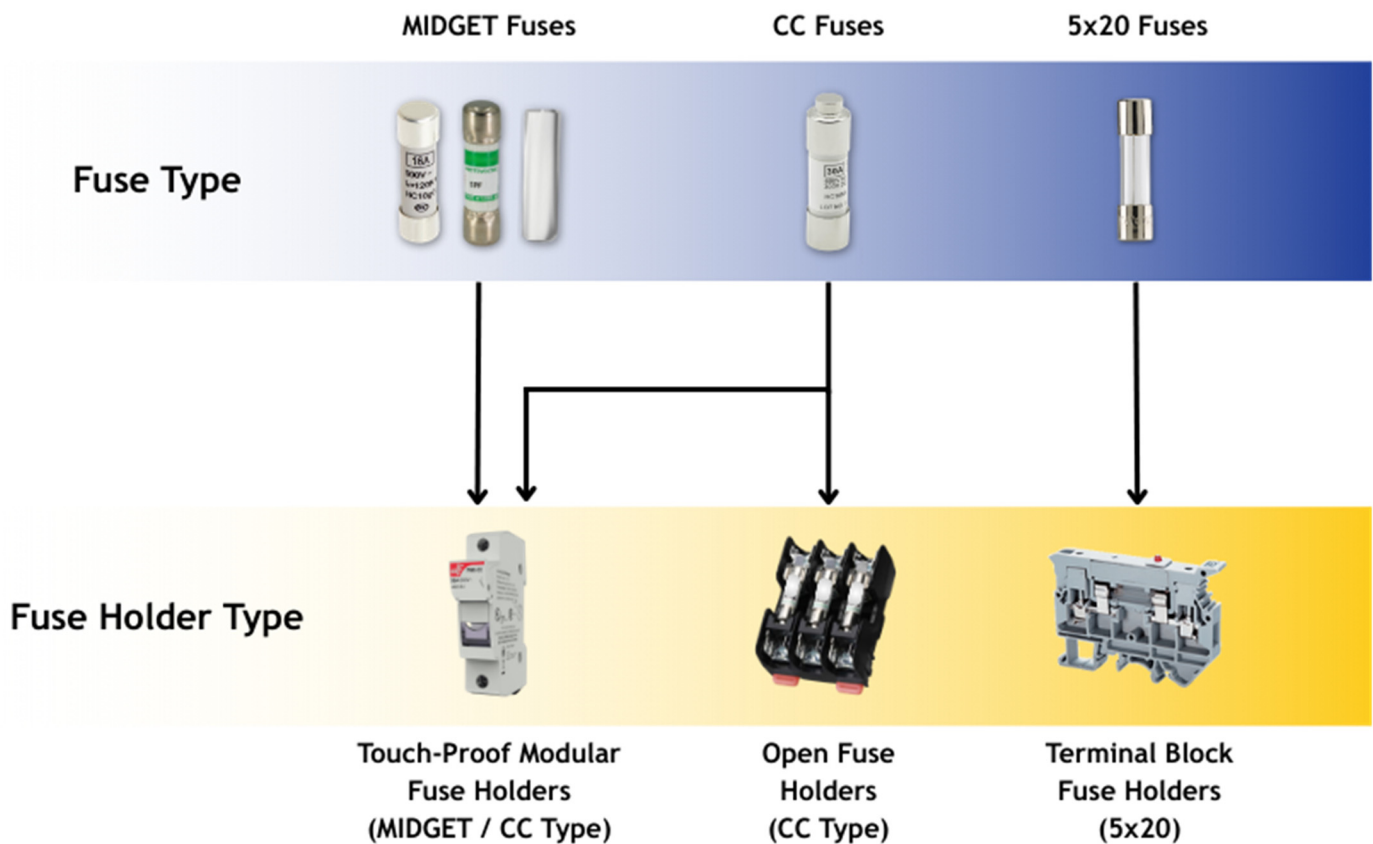


INTRODUCTION

ITC is proud to present our one stop solution for fuses and fuse holders, includes MIDGET, CC, 5x20mm and Dummy fuses, designed to pair seamlessly with our various fuse holders and fuse terminal blocks. All products are available in a variety of mounting and indication options, with operating curves available upon request.

From the PMX Series modular fuse holders with dead-front, touch-proof design, to open-style DIN rail mountable holders with quick-detach mechanisms, ITC's fuse protection solutions are built for performance, safety, and ease of installation.

The following guide shows you how to choose the correct fuses and fuse holders:



For Terminal Block Fuse Holders, please visit page 5 of EB-2605 Terminal Blocks Catalog for product information:

<https://www.itcproducts.com/docs/pdf/catalogs/2/EB-2605%20Terminal%20Blocks.pdf#page=5>



Fuses

ITC stocks several models of MIDGET, CC, 5x20mm and Dummy fuses to be used in its different models of fuse holders and fuse terminal blocks. Operating curves for the various types of fuses are available upon request.



MIDGET Fuses and CC fuses

MIDGET and 'CC' fuses dimensions are 10 x 38mm (13/32x1½").

MIDGET fuses have typically interrupting capacity from 10 to 100kA. CC fuses have higher interrupting capacities (200kA), are easily recognized by their bottle-shaped end cap, and can be used on either CC (rejection) or MIDGET fuse holders. MIDGET fuses cannot be used in CC fuse holders.

Please refer to the introduction section of this catalog for visualized explanation.



MIDGET Fuses (Order by Part No.)

Ratings	10kA interr. cap., 250V, fast acting	10kA interr. cap., 250V, time delay (slow acting)	100kA interr. cap., 600V, fast acting	Pack Qty
0.5A	450.200*	450.100*	450.000*	10
1A	450.201	450.101	450.001	10
2A	450.202	450.102	450.002	10
3A	450.203	450.103	450.003	10
4A	450.204	450.104	450.004	10
5A	450.205	450.105	450.005	10
6A	450.206	450.106	450.006	10
8A	450.208	450.108	450.008	10
10A	450.210	450.110	450.010	10
15A	450.215	450.115	450.015	10
20A	450.220	450.120	450.020	10
25A	450.225	450.125	450.025	10
30A	450.230	450.130	450.030	10

Information subject to change without notice; * Special order only



CC rejection Fuses (Order by Part No.)

Ratings	200kA interr. cap., 600V, time delay (slow acting)	200kA interr. cap., 600V, fast acting	Pack Qty
0.25A	450.514*	450.614*	10
0.5A	450.550	450.650*	10
1A	450.501	450.601	10
1.5A	450.551	450.651	10
2A	450.502	450.602	10
2.5A	450.552	450.652	10
3A	450.503	450.603	10
4A	450.504	450.604	10
5A	450.505	450.605	10
6A	450.506	450.606	10
8A	450.508	450.608	10
10A	450.510	450.610	10
15A	450.515	450.615	10
20A	450.520	450.620	10
25A	450.525	450.625	10
30A	450.530	450.630	10

Information subject to change without notice; * Special order only
Consult ITC for other ratings (1.6A, 3.15A, 3.5A, 6.3A, 9A, 16A)



1000VDC Photovoltaic MIDGET Fuses (Order by Part No.)

Ratings	20kA / 50kA interr. cap., 1000VDC, fast acting	Interr. cap	Pack Qty
1A	450.901	20kA	10
2A	450.902		10
3A	450.903		10
4A	450.904		10
5A	450.905		10
6A	450.906		10
8A	450.907		10
10A	450.910		10
15A	450.915		10
20A	450.920		10
25A	450.925	50kA	10
30A	450.930		10



Information subject to change without notice; * Special order only

5x20 Fuses

5x20 glass miniature fuses are also known as 'GMA' fuses. These are used on ITC's fuse terminal blocks.

How to Order 5x20 Fuses (Order by Part No.)



Rating	Fast acting	Medium time-delay	Interr. cap	Pack Qty
Use on ITC terminal blocks	710.140 / 710.141 / 710.144 710.145 / 710.440 / 710.441	710.140 / 710.141 / 710.144 710.145 / 710.440 / 710.441	-	-
0.5A	450.700 (250V)*	-	10kA@125V	5
1A	450.701 (250V)	450.801 (250V)		5
2A	450.702 (250V)	450.802 (250V)		5
3A	450.703 (125V)	450.803 (250V)		5
4A	450.704 (125V)	450.804 (125V)		5
5A	450.705 (125V)	450.805 (125V)		5
6A	450.706 (125V)	450.806 (125V)		5
10A	450.710 (125V)	-		5
Other ratings available upon request				



Information subject to change without notice

* Special order only

For Terminal Block Fuse Holders, please visit page 5 of EB-2605 Terminal Blocks Catalog for product information.

Dummy/Neutral Fuses

Dummy/neutral fuses are made from copper tube and are tin plated.



How to Order Dummy/Neutral Fuses (Order by Part No.)

Part No.	Description	Maximum nominal current	Pack Qty
450.091	Dummy fuse link - 10x38 mm (MIDGET Fuse Holders) *	30A	10
450.591	Dummy fuse link - 14x51 mm	50A	10
450.891	Dummy fuse link - 22x58 mm	125A	10

Information subject to change without notice

*Dummy fuse link can be used in MIDGET or photovoltaic fuse holders only

DIN Rail Mount Fuse Holders - PMX Series

The **PMX Series** offers **dead-front, touch-proof fuse holders** for MIDGET, CC, and photovoltaic fuses—ensuring safe installation and replacement.

Quick to mount on 35mm DIN rails and easy to wire, the series includes models with or without blown fuse indication, plus a range of convenient accessories for added flexibility.

Features & Specifications:

- Improved airflow channels - better heat dissipation
- Transparent holder for 9x11mm label
- Accessories to assemble/gang multiple poles
- Possibility to seal in the closed position with a wire seal
- 2-position DIN rail clip operated by either a flat or a Philips screwdriver



Technical Specifications:



- **Rated Voltage (AC):** 600/750V (CSA, UL)
- **Rated Voltage (DC):** 24VDC (LED models), 1000V (Photovoltaic application)
- **Poles:** 1 / 2 / 3 / 3+1
- **Maximum Fuse Rating:** 30A (CSA, UL)
- **Interrupting Capacity:** 200kA rms symmetric (Midget); 10kA DC (PV)
- **Nominal Wire Section:** 18-8AWG (0.75-16mm²) solid wire / stranded wire (Cu only)
- **Rated Power dissipation:** 3W
- **Rated Impulse Withstand Voltage:** 6 kV
- **Nominal Tightening Torque:** 2.5 Nm / 22 lb.in Use flat screwdriver 5-6mm or Philips ® #2
- **Operating temperature:** -20°C to +70°C
- **Storage temperature:** -40°C to +80°C
- **Pollution degree:** 3
- **Weight:** 57g per pole.
- **IP Rating:** IP20 (with wire > 10AWG/6mm² or with IP20 protection accessory)
- **De-Rating tables:**

Ambient Temperature de-rating

Temp. °C	% rating
20	100%
30	95%
40	90%
50	80%
60	70%
70	60%

Multi-pole installation de-rating

No. of poles	% rating
1 - 4	100%
5 - 6	80%
7 - 9	70%
>10	60%





WARNING:
FUSE HOLDERS MUST NOT
BE OPERATED UNDER LOAD



PMX Series Fuse Holders (Order by Part No.)

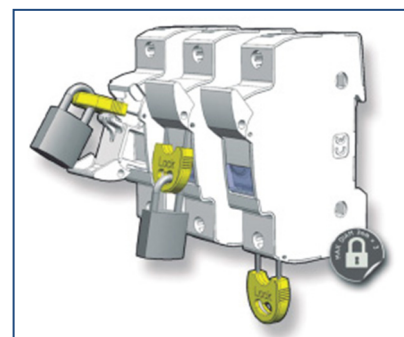
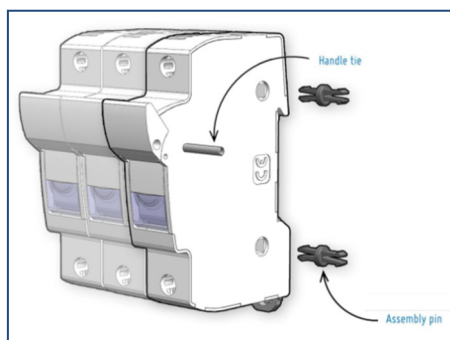
Part No.	Model	Fuse Type (Max)	Feature	Voltage Rating (CSA)	Poles	Certification	Pack Qty.
401.201	485101	MIDGET 30A	-	100-750V	1	CSA, cURus	12
401.202	485104	MIDGET 30A	-	100-750V	2		6
401.203	485105	MIDGET 30A	-	100-750V	3		4
401.204	485106	MIDGET 30A	Neutral pole	100-750V	3+1		3
401.211	485108	MIDGET 30A	NEON indicator	100-750V	1		12
401.212	485110	MIDGET 30A	NEON indicator	100-750V	2		6
401.213	485111	MIDGET 30A	NEON indicator	100-750V	3		4
401.241	485114	MIDGET 30A	LED indicator	12-24VDC	1		12
401.242	485116	MIDGET 30A	LED indicator	12-24VDC	2		6
401.501	485181	CC 30A	-	100-600VAC	1	CSA, UL	12
401.502	485184	CC 30A	-	100-600VAC	2		6
401.503	485185	CC 30A	-	100-600VAC	3		4
401.511	485188	CC 30A	NEON indicator 120V-400V	100-600VAC	1		12
401.512	485190	CC 30A	NEON indicator 120V-400V	100-600VAC	2		6
401.513	485191	CC 30A	NEON indicator 120V-400V	100-600VAC	3		4
401.301	485150	MIDGET 30A	Photovoltaic / Solar	350-1000VDC	1	CSA, cURus	12
401.302	485151	MIDGET 30A	Photovoltaic / Solar	350-1000VDC	2		6
401.311	485152	MIDGET 30A	NEON indicator for PV / Solar	350-1000VDC	1	CSA, UL	12
401.312	485153	MIDGET 30A	NEON indicator for PV / Solar	350-1000VDC	2		6

Information subject to change without notice

Accessories for PMX Series Fuse Holders (Order by Part No.)

Part No.	Description	Pack Qty.
401.081	Padlocking accessory for PMX fuse holders	10
401.082	IP20 protection accessory for PMX fuse holders	10
401.083	Phase separation accessory for PMX fuse holders	10
401.084	Screw cap protective accessory for PMX fuse holders	10
401.085-1	Direct panel mounting accessory, one module	10
401.085-2	Direct panel mounting accessory, two modules	10
401.085-3	Direct panel mounting accessory, three modules	10
400.095	Connector clip for body of modular units (2 are required between units)	12
401.086	Connector pin for handles of modular units (1pc per assembly of 2 units)	12

Information subject to change without notice



Open Fuse Holders



Designed for efficiency and flexibility, ITC's open fuse holder features integral 35mm DIN rail mounting for secure and reliable installation. A quick-release mounting mechanism allows for quick removal or repositioning—without disturbing adjacent components—streamlining assembly and reducing labor time.

These open fuse holders eliminate the need for additional mounting adapters, offering a practical, space-saving solution for modern control systems.



Features:

- Spring-free mechanism allows for easy installation and removal
- Integral DIN rail mounting reduces assembly time
- Quick-Connect terminals accommodate side or top connection
- Ensured branch circuit protection compliance

Technical Specifications:

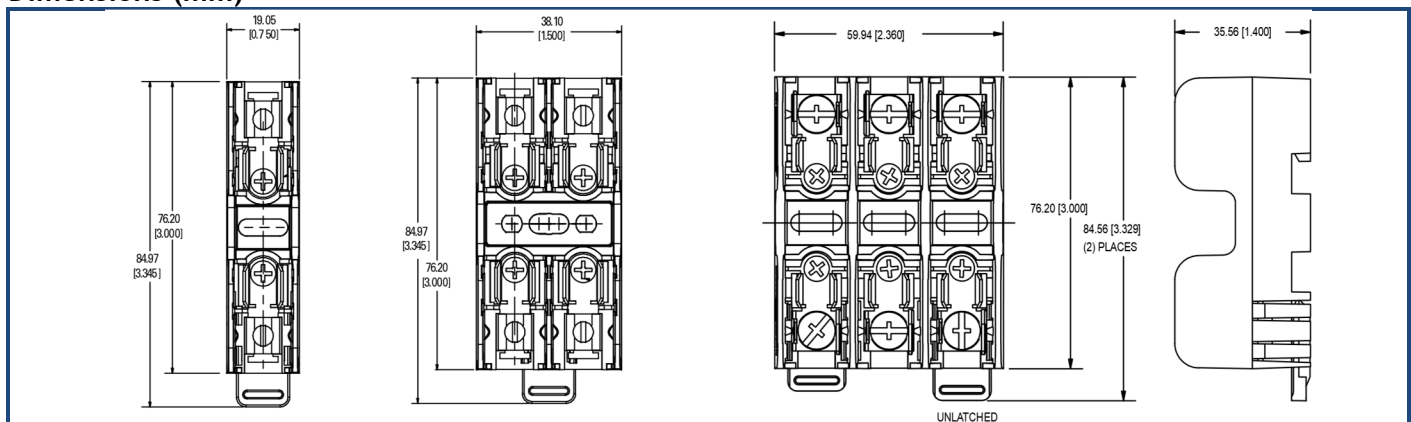
- **Rated Voltage:** 600V AC/DC
- **Maximum Fuse Rating:** 30A
- **Interrupting Capacity:** 200kA
- **Dielectric strength:** 1200V minimum
- **Nominal Wire Section:** 10-14 AWG (6-14mm²) solid wire / stranded wire (Cu only)
- **Nominal Tightening Torque:** 2.3 Nm / 20 lb.in Use flat screwdriver 5-6mm or Philips ® #2
- **Operating temperature:** up to +125°C
- **Materials:** Clip/terminals: Tin-plated copper alloy | Box lug: Copper | Screw & captive pressure plate: Zinc-plated steel | Base: Thermoplastic UL94 V-0 flammability rating

Open Fuse Holders (Order by Part No.)

Part No.	Fuse Type (Max)	Poles	Pack Qty
403.311	CC 30A	1	18
403.312	CC 30A	2	9
403.313	CC 30A	3	6

Information subject to change without notice

Dimensions (mm)





ELECTRICAL COMPONENTS

416.663.7223
www.itcproducts.com
50 Mural St Unit 8
Richmond Hill, ON L4B 1E4



DIN Rail



DIN Rail Accessories



Hinged Enclosures



Thermal
Management



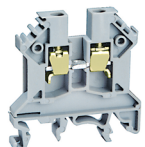
PANEL Lighting



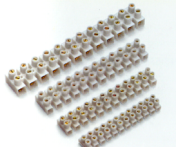
Multipole Connectors



Compact
IP68 Connectors



Terminal Blocks



Terminal Strips



Screwless
Parallel Connectors



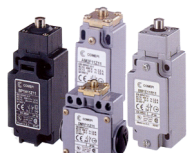
22.5mm Pushbuttons



LED Indicators



Control Stations



Limit Switches



Micro Limit Switches



Safety Switches



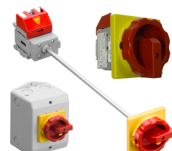
Foot Switches



Circuit Breakers



IEC Contactors



Disconnect Switches



Midget and CC
Fuse Holders



Tower Lights



Power Continuity



Ferrules



Colour Coded Lugs



Crimp Terminals



Termination Kits



Cable Glands



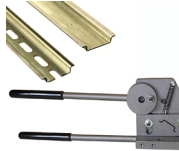
Thread Adapters



Cable Entry Systems



Wire Management



DIN Rail Cutters



Assembly Tables



Cutting & Stripping



Crimping Tools



Hole Cutting &
Punching Tools

SOME OF OUR MANUFACTURING PARTNERS

bimed

df Electric

DSE

ALFRA

COMEPI

IME

TEKNIC
ELECTRIC

DETASULTRA

sontheimer