

Cabinet Infrastructure

DIN rails, profile rails and busbars

For the assembly of components and the potential distribution in switchgears



Weidmüller 

Standard-compliant mounting

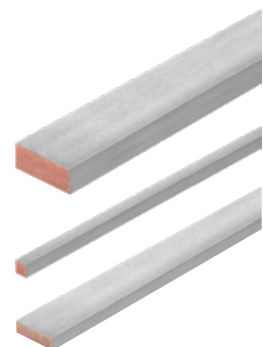
With exactly matched accessories

When mounting terminal blocks and assembling panels, you must always be able to rely on accessories fitting perfectly. Only then do the processes run smoothly and therefore productively. The requirements placed on terminal rails, busbars, as well as cover plates and support brackets, are correspondingly high. They have to comply with numerous standards and safety regulations.

Busbars:

Busbars are used to bundle several conductors of a potential. There are different types of busbars, which can be selected according to the application and the requirements. They differ in material, alloy and dimensions. With our busbars and the appropriate accessories you can solve your individual application within the switchgear.

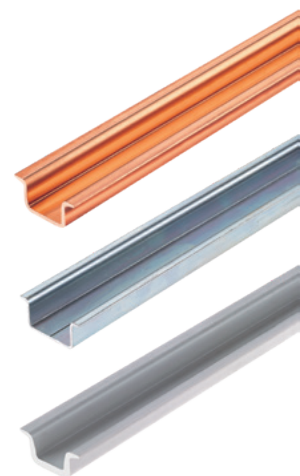
- Punched and unpunched variants
- Variants with dimensions 6x6 / 7,3x1,2 / 10x3 and 15x6 mm
- Variants made of the material steel (galvanized) and copper (galvanized and tin-plated)



DIN rails and top-hat rails according to DIN EN 60715:

TS and DIN rails (DIN EN 60715) are one of the few standardized components in electrical switchgear. The DIN rails and C-profiles are used for mounting and fixing of electronic and electromechanical components such as terminal blocks, relays or power supplies. They differ in material, alloy and dimensions.

- Punched and unpunched variants
- Variants TS 15, TS 20 or C20 as C-rail / C-profile, TS 27 as C-rail / C-profile rail, TS 32 and G 32 as G-rail and TS 35
- Variants made of aluminum (Alu), galvanized steel and steel passivated, copper and plastic (PVC)



The electrical properties of DIN rails are defined in DIN EN 60715. Weidmueller DIN rails meet the requirements of this standard. An excerpt from the standard, to the defined properties, are listed in the following table:

Rail profile	Material	Equivalent E-Cu cross-section (mm ²)	Short-time withstand current 1 s (kA)	Maximum permissible thermal rated current with PEN function (A)
"Top hat" rail IEC 60715/TH 15-5,5	Steel	10	1,2	-
	Copper	25	3	101
	Aluminium	16	1,92	76
G-type rail IEC 60715/G32	Steel	35	4,2	-
	Copper	120	14,4	269
	Aluminium	70	8,4	192
"Top hat" rail IEC 60715/TH 35-7,5	Steel	16	1,92	-
	Copper	50	6	150
	Aluminium	35	4,2	125
"Top hat" rail IEC 60715/TH 35-15	Steel	50	6	-
	Copper	150	18	309
	Aluminium	95	11,4	232

This information is based on standard IEC 60947-7-2 attachment A.

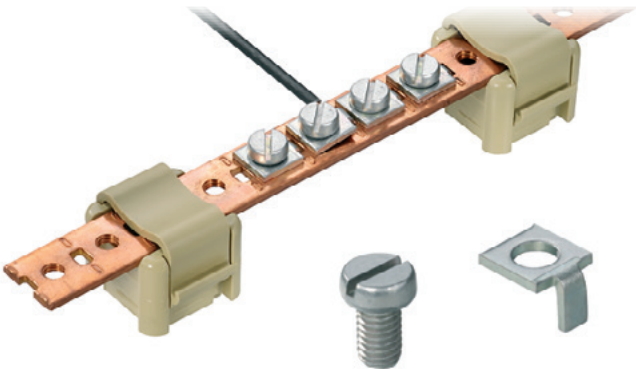
Busbars

Punched and unpunched

Busbars punched

In contrast to solid busbars, punched busbars have numerous holes along their length. They serve to fasten screws, bolts or clamps to them. This allows components to be fastened or electrical connections on the perforated busbar.

In conjunction with rail holders (SH1 - order no. 0299860000), the rails can be fastened with a defined distance on the mounting plate.



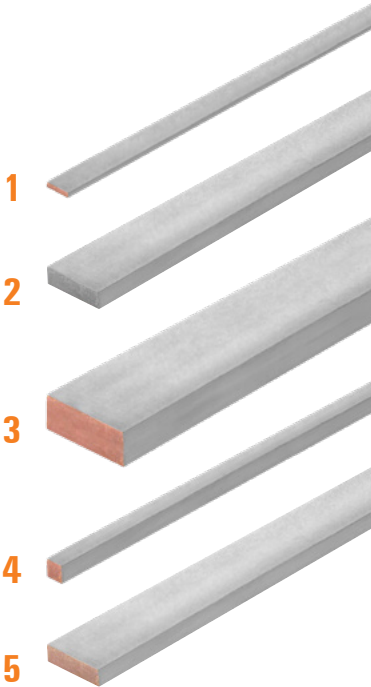
NSch / ESch					
Type	Material	Dimensions	Rated current	Qty.	Order No.
ESCH 1 M	Steel	1000 / 2 / 12 mm	24 A	10 M	0280300000
NSCH 1M	Copper	1000 / 2 / 15 mm	24 A	10 M	0280200000
NSCH 2M	Copper	2000 / 2 / 15 mm	24 A	2 M	1313600000
Pressure piece				Qty.	Order No.
DKSUE NSCH/ESCH				100	0280100000
Clamping screw					
BFSC M5X8 SCHLITZ				100	0296700000
For solid conductors and cable lugs according to DIN 46234.					

Busbars unpunched

In the case of busbars without holes, the current is collection is realized via additional tapping terminals. Thanks to the better air circulation, high currents can be drawn via a the switchgear via a solid busbar within the switchgear. The steel variant is used for mounting of components.

In conjunction with rail holders (SH1 - order no. 0299860000), the rails can be fastened with a defined distance on the mounting plate.

SSch						
No.	Type	Material	Dimensions	Rated current	Qty.	Order No.
1	SSCH 7.3X1.2X1000	Copper	7,3 / 1,2 / 1000 mm	-	1 M	1071200000
2	SSCH 10X3X1000 ST/ZN	Steel	10 / 3 / 1000 mm	-	1 M	0438000000
3	SSCH 15X6X1000 CU/SN	Copper	15 / 6 / 1000 mm	265 A	1 M	0357400000
4	SSCH 6X6X1000 CU/SN	Copper	6 / 6 / 1000 mm	140 A	1 M	0571300000
5	SSCH 10X3X1000 CU/SN	Copper	10 / 3 / 1000 mm	140 A	1 M	0348900000
5	SSCH 10X3X2000 CU VERZ.	Copper	10 / 3 / 2000 mm	-	2 M	1397000000



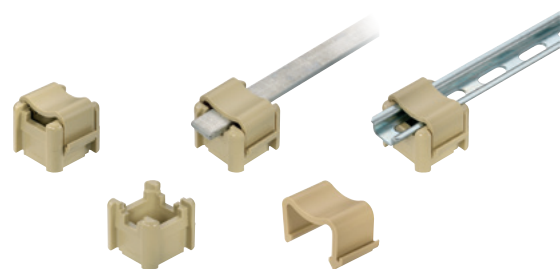
Busbar supports

For mounting plate and TS 35 DIN rails

Busbar supports fix the position of a busbar within the electrical installation. These holders provide an effective way of holding the busbars in their intended places and prevent them from moving due to vibrations or other external influences. Busbar supports are available in sizes and materials and can be selected to suit the application and the rail to be selected.

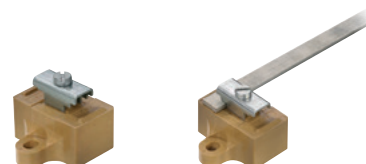
SH 1

Type	Material	Dimensions	Qty.	Order No.
SH 1	Polyamid 66	26 / 24 / 24,5 mm	20	0299860000
Individual parts			Qty.	Best-Nr.
SD SH1			20	0401460000
KLBUE SH1			20	0635960000
Mounting screw				
BFSC M4X9T			100	0103300000
BFSC M4X30			50	0267100000
SH 1: for busbar cross-section 10 x 3, 6 x 6, 15 x 2, 12 x 2, 15 x 2, 15 x 6				



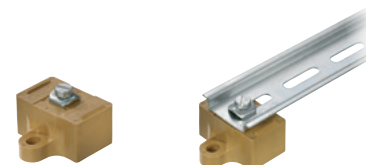
SH 2S

Type	Material	Dimensions	Qty.	Order No.
SH 2 S	KrG	40 / 35,5 / 40 mm	10	0641720000
For busbar cross-section 10 x 3, 6 x 6, 10 x 5, 15 x 6				



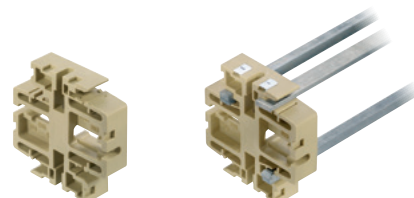
SH 2

Type	Material	Dimensions	Qty.	Order No.
SH 2	KrG	40 / 25 / 40 mm	10	0494920000
The arrangement of mounting rails in totally insulated facilities				



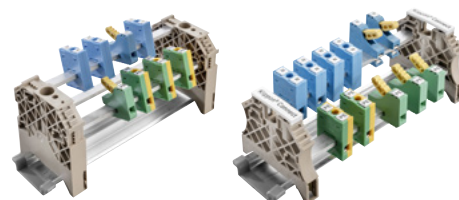
SH 3

Type	Material	Dimensions	Qty.	Order No.
SH 3	Polyamid 66	65 / 65 / 15 mm	10	0556660000
For busbar cross-section 10 x 3, 6 x 6, 10 x 5				



WEW

Type	Colour	Dimensions	Qty.	Order No.
Polyamide with fibre glass, screwable				
WEW 35/1	dark beige	12 / 62,5 / 56 mm	50	1059000000
WEW 35/2	dark beige	8 / 46,5 / 56 mm	50	1061200000
WEW 35/1 GR	grey	12 / 62,5 / 56 mm	50	1227890000
WEW 35/1 SW	black	12 / 63 / 56 mm	50	1162600000
WEW 35/2 GR	grey	8 / 46,5 / 56 mm	100	1859200000
WEW 35/2 SW	black	8 / 47 / 56 mm	50	1061210000
For busbar cross-section 10 x 3, 6 x 6				

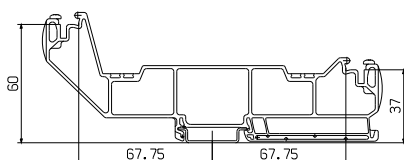


Busbar supports

For TS 35 DIN rails

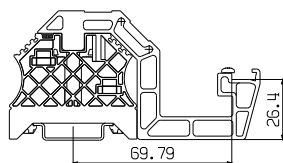
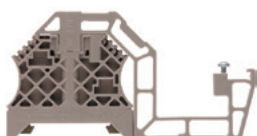
Insulated mounting on TS 35

WSH 1



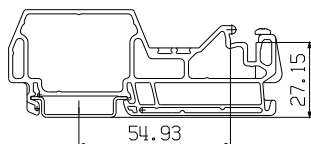
106870000091

WSH 3/H/N



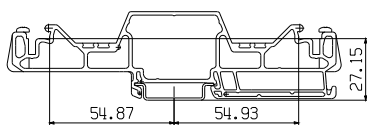
171597000091

WSH 5



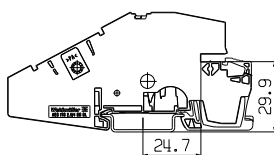
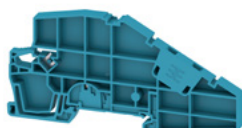
108010000091

WSH 6



108020000091

AEB ITB 2.5/4 BB BL



260386000091

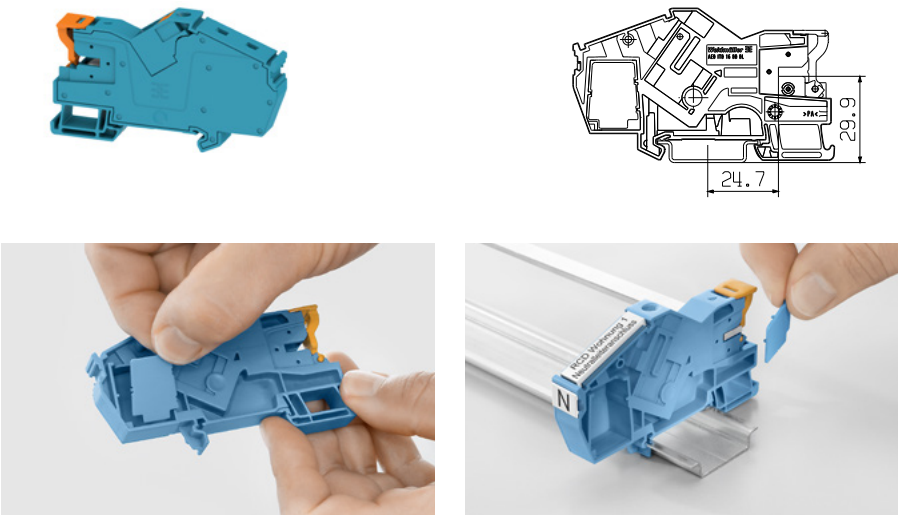
Ordering data

Type	Colour	Dimensions	Qty.	Order No.
WSH 1	dark beige	8 / 110 / 57 mm	10	1068700000
WSH 3/H/N	dark beige	8 / 173 / 70 mm	10	1715970000
WSH 5	dark beige	8 / 99 / 39 mm	10	1080100000
WSH 6	dark beige	8 / 147 / 39 mm	10	1080200000
AEB ITB 2.5/4 BB BL	blue	8 / 104 / 50,5 mm	25	2603860000

Busbar supports and cover profiles

For TS 35 DIN rails and 10 x 3 busbar

AEB ITB 16 BB BL




266913000091

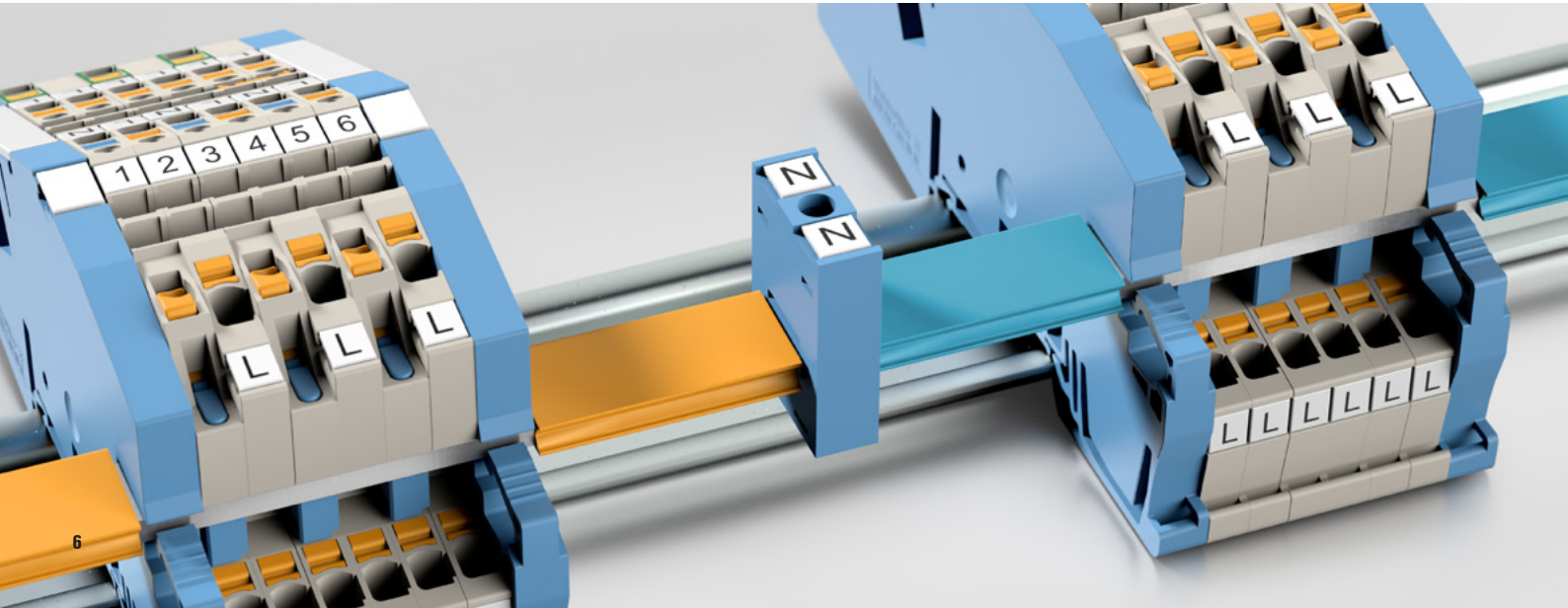
Ordering data

Type	Colour	Dimensions	Qty.	Order No.
AEB ITB 16 BB BL	blue	12 / 91 / 53 mm	20	2669130000

Safe and flexible covering of live components

The BB-CV AITB 3X10 cover profile provides the necessary finger safety within the switchgear. Protruding parts of the busbar, which are provided as a reserve within the switchgear, can thus be protected against unintentional contact. The cover profile can be flexibly and individually cut to length.

Cover profile	BB-CV			
	Type	Length	Qty.	Order No.
	BB-CV AITB 3X10	300 mm	10	2911380000
	BB-CV AITB 3X10 BL	300 mm	10	2918930000

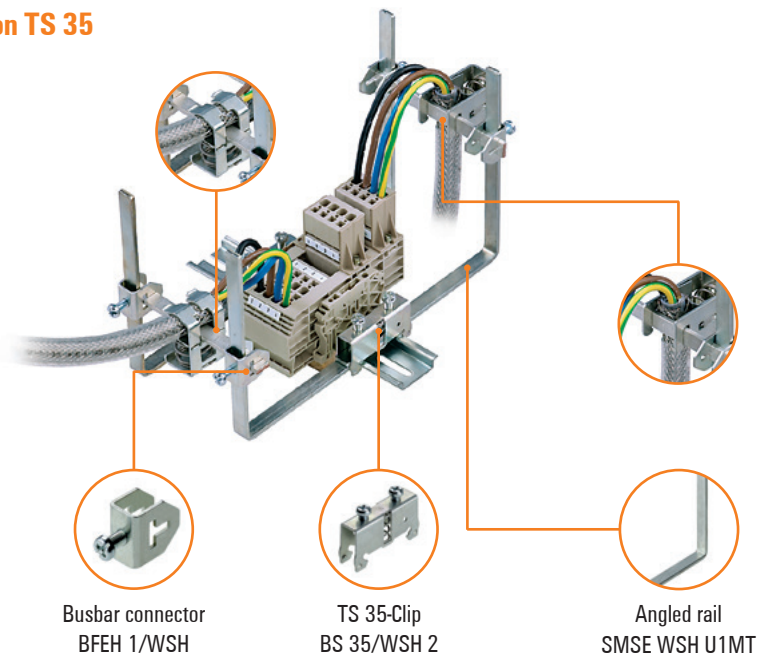


Busbar supports

For TS 35 DIN rails

Conductive mounting on TS 35

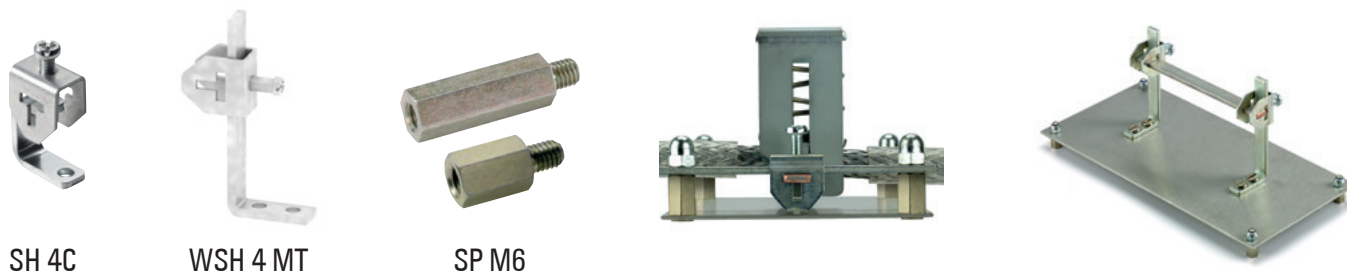
TS 35-Clip BS 35/WSH 2



Ordering data

Type	Dimensions	Qty.	Order No.
TS 35-Clip			
BS 35/WSH 2	52 / 13 / 37 mm	10	1760720000
Busbar connector			
BFEH 1/WSH	20 / 13,5 / 31 mm	10	1082400000
Angled rail			
SMSE WSH U1 MT	134 / 10 / 134 mm	10	1083900000
SMSE WSH 135/60 MT	123,5 / 10 / 3 mm	10	1246990000
Rail support sets			
WSH 18 MT		10	1083100000
WSH 19 MT		10	1083200000

DIN rail holders / spacers



Bestelldaten

Type	Dimensions	Qty.	Order No.
DIN rail holders			
WSH 4 MT	15 / 40,5 / 70 mm	10	1079900000
SH 4C	15 / 25 / 25 mm	10	1340870000
Spacers			
SP M6 15 MSZN	10 / 11,2 / 15 mm	1	3896100000
SP M6 20 MSZN	10 / 11,2 / 20 mm	2	3896200000
SP M6 30 MSZN	10 / 11,2 / 30 mm	2	3896300000

Busbar tap terminals

Uninsulated

for busbar 10 x 3 mm



Solid	0.5...6 mm ²
Flexible	0.5...4 mm ²
Stranded	...
Clamping screw	M 3
Stripping length	16 mm

for busbar 10 x 3 mm

For subsequently slewing-in



Solid	1...10 mm ²
Flexible	1.5...10 mm ²
Stranded	...
Clamping screw	M 4
Stripping length	19 mm

for busbar 10 x 3 mm

Also for 10 x 5 mm busbars



Solid	1.5...10 mm ²
Flexible	2.5...10 mm ²
Stranded	...
Clamping screw	M 4
Stripping length	19 mm

for busbar 10 x 3 mm



Solid	2.5...16 mm ²
Flexible	2.5...16 mm ²
Stranded	16...25 mm ²
Clamping screw	M 4
Stripping length	16 mm

for busbar 10 x 3 mm



Solid	16...16 mm ²
Flexible	16...35 mm ²
Stranded	...
Clamping screw	M 6
Stripping length	19 mm

for busbar 6 x 6 mm



Solid	0.5...6 mm ²
Flexible	0.5...4 mm ²
Stranded	...
Clamping screw	M 3
Stripping length	16 mm

for busbar 6 x 6 mm



Solid	2.5...16 mm ²
Flexible	2.5...16 mm ²
Stranded	16...25 mm ²
Clamping screw	M 4
Stripping length	12 mm

ZB 4

Type	Colour	Dimensions	Qty.	Order No.
ZB 4	silver	5,3 / 15,5 mm / 16 mm	50	0316500000
IK 4 BL ZB4	silver	6 / 19 / 14,5 mm	50	0475480000
IK 4 GG ZB4	silver	6 / 19 / 14,5 mm	50	0475460000

ZBE 6

Type	Colour	Dimensions	Qty.	Order No.
ZBE 6	silver	8 / 19 / 28 mm	50	0459500000
IK 6 GG ZBE6K	silver	7,8 / 22,5 / 23 mm	50	0526060000

ZB 10

Type	Colour	Dimensions	Qty.	Order No.
ZB 10 F.10X3/10X5/10X10	silver	8 / 19,5 / 29,1 mm	50	1261300000

ZB 16

Type	Colour	Dimensions	Qty.	Order No.
ZB 16 ZKSC	silver	10 / 16 / 24 mm	50	0316600000
IK 16/ZB16 BL	silver	9 / 19 / 20 mm	50	0502980000
IK 16/ZB16 GG	silver	9 / 19 / 20 mm	50	0502960000

ZB 35

Type	Colour	Dimensions	Qty.	Order No.
ZB 35/M6X16	silver	14 / 18 / 34 mm	20	0266500000
IK 35/ZB35 BL	silver	14 / 32 / 8,6 mm	50	0502780000

ZB 4/6

Type	Colour	Dimensions	Qty.	Order No.
ZB 4/6	silver	5,3 / 12 / 20 mm	50	0556700000

ZB 16/6

Type	Colour	Dimensions	Qty.	Order No.
ZB 16/6	silver	10 / 12,5 / 30,7 mm	50	0556800000


Busbar tap terminals

Insulated

for busbar 10 x 3 mm

	Solid	0.5...6 mm ²
	Flexible	...
	Stranded	...
	Clamping screw	M 3
	Stripping length	16 mm

for busbar 10 x 3 mm

For subsequently slewing-in		
	Solid	1...10 mm ²
	Flexible	1.5...10 mm ²
	Stranded	...
	Clamping screw	M 4
	Stripping length	19 mm


for busbar 10 x 3 mm

	Solid	2.5...16 mm ²
	Flexible	2.5...16 mm ²
	Stranded	16...25 mm ²
	Clamping screw	M 4
	Stripping length	16 mm

for busbar 10 x 3 mm

	Solid	16...16 mm ²
	Flexible	16...35 mm ²
	Stranded	...
	Clamping screw	M 6
	Stripping length	19 mm

for busbar 10 x 3 mm

Tension clamp connection		
	Solid	0.5...4 mm ²
	Flexible	0.5...2.5 mm ²
	Stranded	...
	Clamping screw	
	Stripping length	10 mm

for busbar 6 x 6 mm

	Solid	0.5...6 mm ²
	Flexible	0.5...4 mm ²
	Stranded	...
	Clamping screw	M 3
	Stripping length	16 mm

for busbar 6 x 6 mm

	Solid	2.5...16 mm ²
	Flexible	2.5...16 mm ²
	Stranded	16...25 mm ²
	Clamping screw	M 4
	Stripping length	12 mm

ZB 4

Type	Colour	Dimensions	Qty.	Order No.
ZB 4G BL	silver	7,4 / 19,5 / 27 mm	50	0322180000
ZB 4G GN/GE	silver	7,4 / 19,5 / 27 mm	50	0322160000
ZB 4G SW	silver	7,4 / 19,5 / 27 mm	50	0322110000
ZB 4K BL	silver	6 / 19 / 20,4 mm	50	0475380000
ZB 4K GE/GN	silver	6 / 19 / 20,4 mm	50	0475360000

ZBE 6

Type	Colour	Dimensions	Qty.	Order No.
ZBE 6K BL	blue	8 / 22,5 / 19,5 mm	50	0525980000
ZBE 6K GE/GN	yellow, green	8 / 22,5 / 19,5 mm	50	0525960000
ZBE 6K SW	black	8 / 22,5 / 19,5 mm	50	0525910000

ZB 16K

Type	Colour	Dimensions	Qty.	Order No.
ZB 16K BL	silver	10 / 19 / 26,8 mm	50	0502680000
ZB 16K GE/GN	silver	10 / 19 / 26,8 mm	50	0502660000

ZB 35K

Type	Colour	Dimensions	Qty.	Order No.
ZB 35K BL M6X16	silver	14 / 32 / 34 mm	20	0502680000
ZB 35K GE/GN M6X16	silver	14 / 32 / 34 mm	20	0502660000
ZB 35K SW M6X16	silver	14 / 32 / 34 mm	20	0502610000

ZF 4 S

Type	Colour	Dimensions	Qty.	Order No.
ZF 4 S	silver	6,1 / 24,5 / 22 mm	50	1814680000
ZF 4 S BL	silver	6,1 / 24,5 / 22 mm	50	1814660000
ZF 4 S GN	green	6,1 / 24,5 / 22 mm	50	1814670000

ZB 4 / 6K

Type	Colour	Dimensions	Qty.	Order No.
ZB 4/6K BL	silver	6 / 25 / 14,7 mm	50	0565480000
ZB 4/6K GE/GN	silver	6 / 25 / 14,7 mm	50	0565460000

ZB 16 / 6K

Type	Colour	Dimensions	Qty.	Order No.
ZB 16/6K GE/GN	silver	10 / 25 / 30,7 mm	50	0569660000

Busbar tap terminals

Insulated

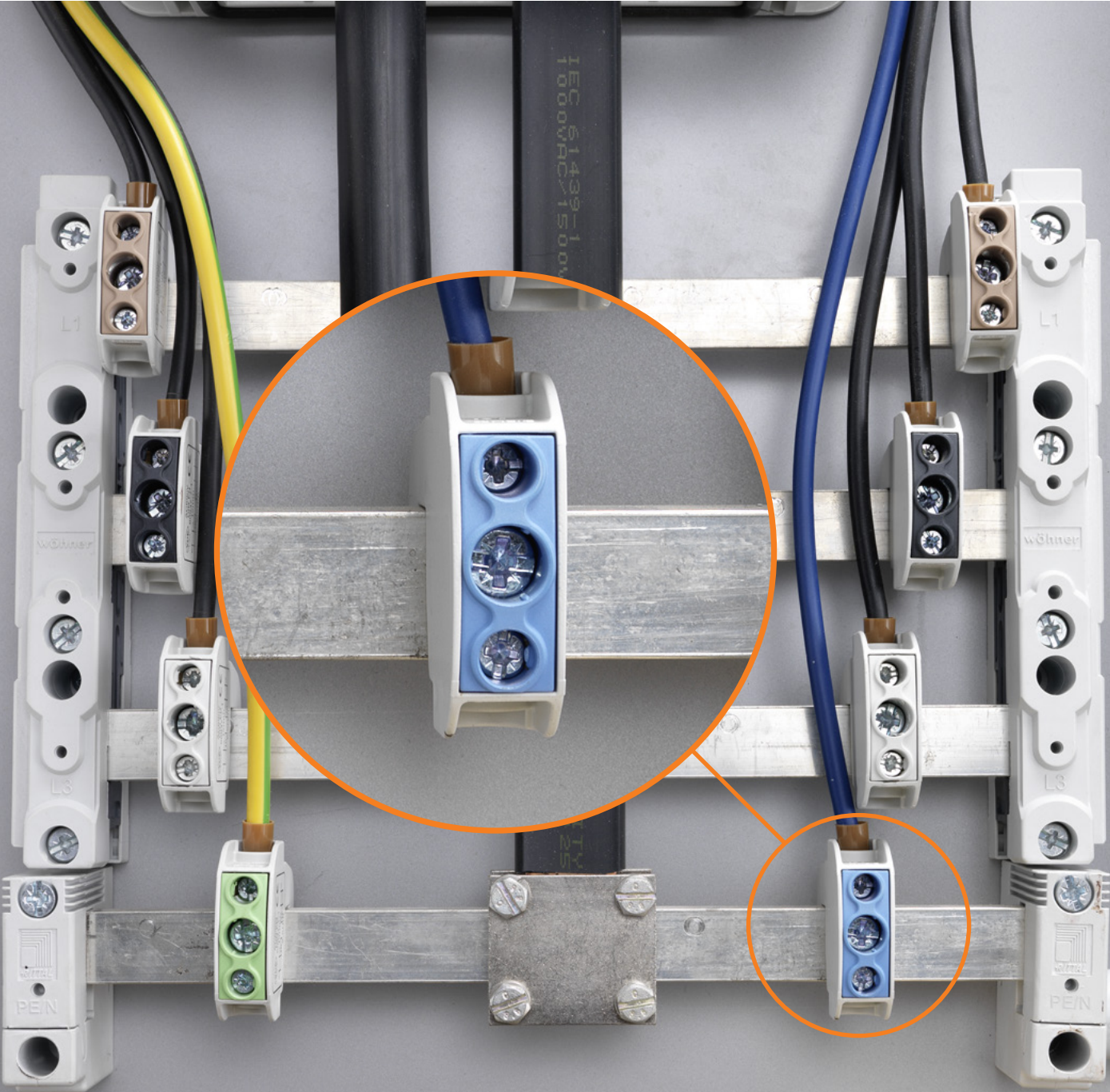
Busbar tap terminal



WBBD 16

Type	Rated voltage	Rated current	Clamping range min. / max.	Colour	Qty.	Order No.
WBBD 16 BL	690 V	114 A	1,5...16 mm²	blue	12	2603850000
WBBD 16 GN	690 V	114 A	1,5...16 mm²	green	12	2603860000
WBBD 16 GY	690 V	114 A	1,5...16 mm²	grey	12	2603840000

For busbar thickness 3...10 mm



DIN rails and Top Hat rails

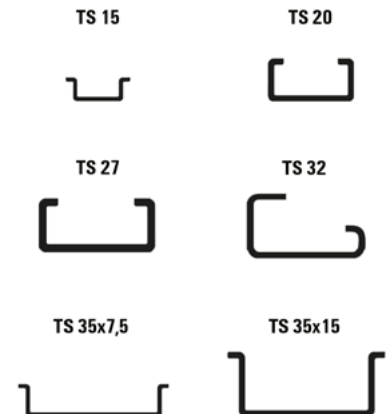
For electrical switchgear

DIN rails TS and mounting rails are one of the few standardized components in electrical switchgears. The DIN rails and C-profiles are used for mounting and fixing electronic and electromechanical components such as terminal blocks, relays or even power supplies.

Profile rail designs

Depending on the industry and market requirements, DIN rails and mounting rails TS differ in various designs and versions. Weidmüller offers the most common profile rails on the market, also according to standard and DIN such as DIN EN 60715, in various lengths and materials:

- TS 15
- TS 20 or C20 as C-rail / C-profile
- TS 27 as C-rail / C-profile
- TS 32 and G 32 as G-rail / G-profile
- TS 35 as TS35x7,5 / TS35x15



Profile rail materials

The raw material or the treatment of the profile rails and C-profiles determines the electrical properties and the application area. Weidmüller offers the rails in the following materials and coatings:

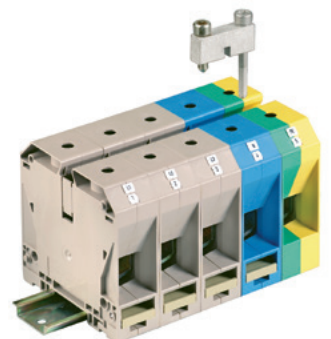
- Aluminum (Alu)
- Galvanized steel and steel passivated
- Copper
- Plastic (PVC)

Mounting rails and DIN top-hat rails as PE conductor or PEN busbar

DIN rails and C profiles can also be used as protective earth busbars (PE conductors) or PEN conductors under certain conditions. The Weidmüller PE terminal blocks with spring and screw connections fulfil the requirements for PE conductors defined in IEC 60947-7-2. According to VDE 0100 Part 540, protective earth conductors and neutral conductors with wire cross-sections above 10 mm² may be combined to form a conductor abbreviated as PEN.

If a terminal rail is used as a PEN busbar, the following criteria have to be observed:

- Only profiles made of E-Cu or aluminium are permissible
- Short-circuit currents and thermal rated currents
- For the protective measure "Protective insulation", insulate DIN rails



DIN rails and accessories

Angles, spacers and cover plates

Support rail carrier straight



Type	Internal thread	Qty.	Order No.
TST 2/M5	M 5	10	1286600000
TST 2/M6	M 6	10	0101700000
Type		Qty.	Order No.
Mounting screw			
FKSC M5X8 D9/SW2.5		50	0295900000
FKSC M6X12 D9/SW3		50	0353500000
Mounting plates and fastening screws			
FKSC M6X8 D9/SW3		50	0642600000

The TST terminal rail support serves to install terminal rails in the frame or using a cut-out.
For the terminal rail supports, Weidmüller offers fastening screws with hexagonal socket and an especially low head, such that terminal blocks can also be mounted above the screw.

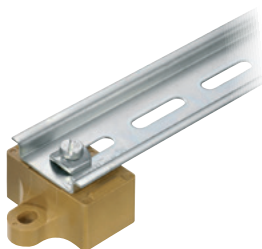
Support rail carrier angled (35 degrees)



Type	Internal thread	Qty.	Order No.
TSTW 5/M5	M 5	10	0178100000
TSTW 5/M5 ZN	M 5	10	1779100000
TSTW 6/M6	M 6	10	0164000000
TSTW D 4.3	-	10	1610110000

Terminal rail supports of type TSTW serve for angled mounting of terminal rails at an angle of 35°.

Support rail carrier insulated to mounting plate



Type	Material	Dimensions	Qty.	Order No.
SH 2	KrG	40 / 25 / 40 mm	10	0494920000

The arrangement of mounting rails in totally insulated facilities

End caps for TS 35



Type	Qty.	Order No.
End cap TS 35 x 7.5		
TS END CAP 35X7.5	100	1283470000
End cap TS 35 x 15		
TS END CAP 35X15	100	1283480000



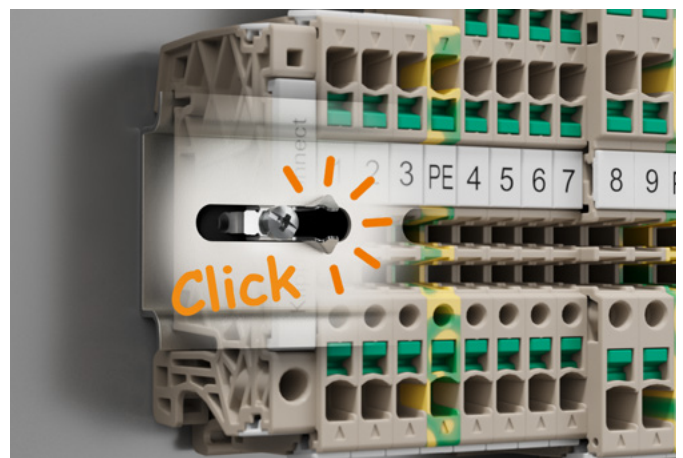
One click to perfection

Klippon® RailSnapper FMC for direct DIN rail installation

The Klippon® RailSnapper: Your key to simple and secure fastening of your DIN rail. The clever click mechanism offers you maximum security for DIN rail mounting.

But that's not all - our low installation height allows you to mount with components already snapped on. This allows you to use the entire length of your DIN rail without any restrictions.

No more annoying cut-outs for fixing screws and unused space on your DIN rail. With the Klippon® RailSnapper you can optimize your processes and create valuable space in your cabinet.



FMC 5.2/1.0 SC



Technical Data	
Thread size	
Hole dimension / Drill hole	mm
Ordering data	
	Variants with screw
	Variants with rivet
Note	

		M3.5
		2,9
Type	Qty.	Order no.
FMC 5.2/1.0 SC	100	2920530000

FMC 5.2/1.0 BR



		3,3
Type	Qty.	Order no.
FMC 5.2/1.0 BR	100	2968380000

DIN rails and accessories

Rail cutting and punching devices

For burr-free cutting and punching of DIN-rail profile rails, Weidmüller offers rail cutting and punching devices TSLD 5 and TSLD C Profile bars and C-profiles can be easily cut to length and punched without much effort. Other product features of the TSLD are:

- Table-top unit for mounting on workbench or similar workplaces
- Guiding device for 90° angle accurate cutting
- Burr-free cutting of top-hat rails without waste
- Shear plate regrindable
- Integrated length stop (up to 1,000 mm)



TSLD 5



TSD 35



Perforating / Punching
of Top Hat Rails



10x3 busbar



TS 15x5,5 mm acc.
EN 60715 (t=1,0 mm)



TS 32 mm acc.
EN 60715 (t=1,5 mm)



TS 35x7,5 mm acc.
EN 60715 (t=1,0 mm)



TS 35x15 mm acc.
EN 60715 (t=1,5 mm)

Type	Perforating / Punching	10x3 busbar	TS 15x5,5x1,0	TS 32	C Profile	TS 35x7,5x1,0	TS 35x15x1,5	Qty.	Order No.
TSLD 5	x	x	x	x	-	x	x	1	9918700000
TSLD C*	x	x	x	-	x*	x	x	1	1270310000
TSD 35	-	-	-	-	-	x	x	1	1318510000

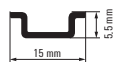
*on request / G-profile (TS 32) is replaced by customer-specific C-profile

DIN rails and Profile rails

15 x 5 Top Hat Section rails, 20 x 10 C-Type rails and 27 x 12.5 C-Type rails

DIN Rails TS 15

unslopped

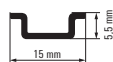


TS 15 x 5

Type	Short circuit strength	Short-time withstand current	PEN function	Length	Thickness	Qty.	Order No.
Steel, galvanised and passivated							
TS 15X5 2M/ST/ZN	10,00 mm ²	1,2 kA/1s	-	2000 mm	1,00 mm	2 M	0514200000

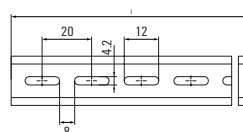
DIN Rails TS 15

with slot



TS 15 x 5

Type	Short circuit strength	Short-time withstand current	PEN function	Length	Thickness	Qty.	Order No.
Steel, galvanised and passivated							
TS 15X5/LL 2M/ST/ZN	10,00 mm ²	1,2 kA/1s	-	2000 mm	1,00 mm	2 M	0117500000
TS 15X5/LL 1M/ST/ZN	10,00 mm ²	1,2 kA/1s	-	1000 mm	1,00 mm	1 M	0117510000



C-Type Rails TS 20



TS 20 x 10

Type	Short circuit strength	Short-time withstand current	PEN function	Length	Thickness	Qty.	Order No.
TS 20/CX10 2M/ST/ZN	-	-	-	2000 mm	1,50 mm	2 M	0316400000

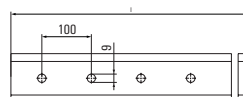
C-Type Rails TS 27

round perforation



TS 27 x 12.5

Type	Short circuit strength	Short-time withstand current	PEN function	Length	Thickness	Qty.	Order No.
TS 27X12.5M/ST/F.ZN	-	-	-	2000 mm	2,00 mm	2 M	1802690000



DIN rails and Profile rails

32 x 15 G-Type rails and 35 x 7.5 Top Hat Section rails

G-Type Rails TS 32

unslotted

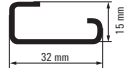


TS 32 x 15

Type	Short circuit strength	Short-time withstand current	PEN function	Length	Thickness	Qty.	Order No.
Aluminium							
TS 32X15 2M/AL/BK	70,00 mm ²	8,4 kA/1s	192,00 A	2000 mm	1,50 mm	2 M	0169300000
Steel, galvanised and passivated							
TS 32X15 2M/ST/ZN	35,00 mm ²	4,2 kA/1s	-	2000 mm	1,50 mm	2 M	0122800000
Stainless steel, rust-proof							
TS 32X15 2M/CRN	-	-	-	2000 mm	1,50 mm	2 M	0293220000

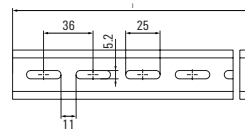
G-Type Rails TS 32

with slot



TS 32 x 15

Type	Short circuit strength	Short-time withstand current	PEN function	Length	Thickness	Qty.	Order No.
Steel, galvanised and passivated							
TS 32X15/LL 2M/ST/ZN	35,00 mm ²	4,2 kA/1s	-	2000 mm	1,50 mm	2 M	0514400000



DIN Rails TS 35 x 7.5

unslotted



TS 35 x 7.5

Type	Short circuit strength	Short-time withstand current	PEN function	Length	Thickness	Qty.	Order No.
Copper							
TS 35X7.5/1.0 2M/CU/BK	50,00 mm ²	6 kA/1s	150,00 A	2000 mm	1,00 mm	2 M	2731380000
Aluminium							
TS 35X7.5 2M/AL/BK	35,00 mm ²	4,2 kA/1s	125,00 A	2000 mm	1,00 mm	2 M	0330800000
Steel, galvanised and passivated							
TS 35X7.5 2M/ST/ZN	16,00 mm ²	1,92 kA/1s	-	2000 mm	1,00 mm	2 M	0383400000
TS 35X7.5 1M/ST/ZN	16,00 mm ²	1,92 kA/1s	-	1000 mm	1,00 mm	1 M	0383410000
Stainless steel, rust-proof							
TS 35X7.5 2M/CRN	-	-	-	2000 mm	1,00 mm	2 M	1747350000
TS 35X7.5 2M/CRN 316L	-	-	-	2000 mm	1,00 mm	2 M	2716000000

DIN rails

35 x 7.5 Top Hat Section rails

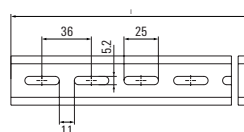
DIN Rails TS 35 x 7.5

with slot

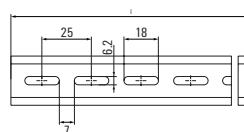


TS 35 x 7.5

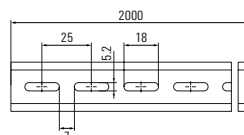
Type	Short circuit strength	Short-time withstand current	PEN function	Length	Thickness	Qty.	Order No.
Steel, galvanised and passivated							
TS 35X7.5/LL 1M/ST/ZN	16,00 mm ²	1,92 kA/1s	-	1000 mm	1,00 mm	1 M	0514510000
TS 35X7.5/LL 2M/ST/ZN	16,00 mm ²	1,92 kA/1s	-	2000 mm	1,00 mm	2 M	0514500000
TS 35X7.5/LL 2M/ST/SZ	16,00 mm ²	1,92 kA/1s	-	2000 mm	1,00 mm	2 M	7915060000



Type	Short circuit strength	Short-time withstand current	PEN function	Length	Thickness	Qty.	Order No.
Steel, galvanised and passivated							
TS 35X7.5/LL/6 2M/ST/ZN	16,00 mm ²	1,92 kA/1s	-	2000 mm	1,00 mm	2 M	0514570000
TS 35X7.5/LL/6X18 2M/D	16,00 mm ²	1,92 kA/1s	-	2000 mm	1,00 mm	2 M	1071690000



Type	Short circuit strength	Short-time withstand current	PEN function	Length	Thickness	Qty.	Order No.
Steel, galvanised and passivated							
TS 35X7.5/5X18 2M/ST/SZ	16,00 mm ²	1,92 kA/1s	-	2000 mm	1,00 mm	2 M	1879090000

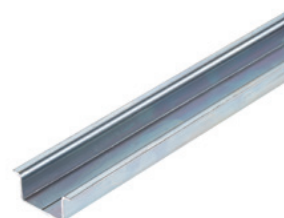


DIN rails

35 x 15 Top Hat Section rails

DIN Rails TS 35 x 15

unslotted



TS 35 x 15

Type	Short circuit strength	Short-time withstand current	PEN function	Length	Thickness	Qty.	Order No.
Copper							
TS 35X15/2.3 2M/CU/BK	150,00 mm ²	18 kA/1s	309,00 A	2000 mm	2,30 mm	2 M	0270100000

Type	Short circuit strength	Short-time withstand current	PEN function	Length	Thickness	Qty.	Order No.
Aluminium							
TS 35X15/2.3 2M/AL/BK	95,00 mm ²	11,4 kA/1s	232,00 A	2000 mm	2,30 mm	2 M	1848290000
Steel, galvanised and passivated							
TS 35X15/2.3 2M/ST/ZN	50,00 mm ²	6 kA/1s	-	2000 mm	2,30 mm	2 M	0498000000
TS 35X15 2M/ST/ZN	50,00 mm ²	6 kA/1s	-	2000 mm	1,50 mm	2 M	0236400000

Type	Short circuit strength	Short-time withstand current	PEN function	Length	Thickness	Qty.	Order No.
Plastic PVC RAL 7035							
TSK 35X15 2M PVC/GR	-	-	-	2000 mm	3,00 mm	2 M	0514300000

DIN rails

35 x 15 Top Hat Section rails

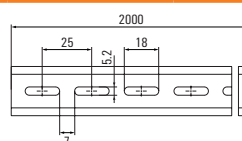
DIN Rails TS 35 x 15

with slot

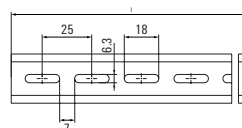


TS 35 x 15

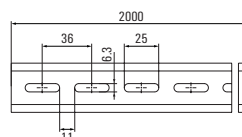
Type	Short circuit strength	Short-time withstand current	PEN function	Length	Thickness	Qty.	Order No.
Steel, galvanised and passivated							
TS 35X15/5X18 2M/ST/SZ	50,00 mm ²	6 kA/1s	-	2000 mm	1,50 mm	2 M	1879100000
TS 35X15/5X18 2M/ST/ZN	50,00 mm ²	6 kA/1s	-	2000 mm	1,50 mm	2 M	1837380000



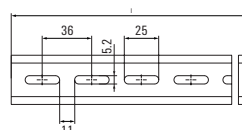
Type	Short circuit strength	Short-time withstand current	PEN function	Length	Thickness	Qty.	Order No.
Steel, galvanised and passivated							
TS 35X15/6X18 2M/ST/ZN	50,00 mm ²	6 kA/1s	-	2000 mm	1,50 mm	2 M	1805980000



Type	Short circuit strength	Short-time withstand current	PEN function	Length	Thickness	Qty.	Order No.
Steel, galvanised and passivated							
TS 35X15/6X25 2M/ST/ZN	50,00 mm ²	6 kA/1s	-	2000 mm	1,50 mm	2 M	1866290000



Type	Short circuit strength	Short-time withstand current	PEN function	Length	Thickness	Qty.	Order No.
Steel, galvanised and passivated							
TS 35X15/LL 1M/ST/ZN	50,00 mm ²	6 kA/1s	-	1000 mm	1,50 mm	1 M	0236510000
TS 35X15/LL 2M/ST/SZ	50,00 mm ²	6 kA/1s	-	2000 mm	1,50 mm	2 M	7907490000
TS 35X15/LL 2M/ST/ZN	50,00 mm ²	6 kA/1s	-	2000 mm	1,50 mm	2 M	0236500000
TS 35X15/LL 2M/ST/ZN/O	50,00 mm ²	6 kA/1s	-	2000 mm	1,50 mm	2 M	1071680000



Weidmüller – Your partner in Smart Industrial Connectivity

As experienced experts we support our customers and partners around the world with products, solutions and services in the industrial environment of power, signal and data. We are at home in their industries and markets and know the technological challenges of tomorrow. We are therefore continuously developing innovative, sustainable and useful solutions for their individual needs. Together we set standards in Smart Industrial Connectivity.

We cannot guarantee that there are no mistakes in the publications or software provided by us to the customer for the purpose of making orders. We try our best to quickly correct errors in our printed media.

All orders are based on our general terms of delivery, which can be reviewed on the websites of our group companies where you place your order. On demand we can also send the general terms of delivery to you.