

Panel Building Solutions Product Guide



CONNECT

- 4 Automation & Control
- 5 Switches
- 6 Relays
- 7 Sensors
- 8 Connectors
- 9 Panel Mount Indicators
- 10 Power Products
- 11 Cable Assemblies
- 12 Wire and Cable
- 13 Cable Management

ASSEMBLE

- 14 Enclosures
- 15 Workshop Tools

TEST

- 16 Test Meters
- 17 Bench Testing

LINE CARD

- 18 Product Categories

OUR RANGE, YOUR CHOICE

RS PRO, our own budget-friendly brand, offers premium quality without the price tag. Easily integrate RS PRO products into your existing setup for smooth, efficient, and cost-effective operations.

A combination of quality, choice, and value for industrial suppliers makes RS PRO your smart choice.



QUALITY

Our products are tested for great performance and come with a 3-year warranty.*

*Most appliances and tools.



CHOICE

Over 90,000 products across 1500 industries with a low return rate of less than 0.02%.



VALUE

We provide customers with one brand they can trust, with the quality and price they expect and a growing choice of sustainable products and solutions.

RS PRO Seal of Approval

- **AUDITED** in compliance with industry standards
- **INSPECTED** for guaranteed quality and performance
- **TESTED** by leading engineers



AUDITED

In compliance with industry standard



INSPECTED

By leading engineers



TESTED

For guaranteed quality and performance



Maintain safety and control in panels with RS PRO automation and control gear. Plus, enjoy value-for-money reliability. Our range covers the full breadth of requirements for machinery and process control, switching, and a host of industrial applications.



SWITCH DISCONNECTS



De-energize machinery and circuits to allow safe working on the installation.

- Panel and DIN rail versions
- Housings of ABS or stainless steel

WARNING & STATUS INDICATORS



Get immediate indication of machinery in operation or a fault condition.

- Magnet, surface, or DIN rail mount options
- Single and pulsing sounders
- AC or DC powered options

MOTOR CONTROLLERS

- Options include Soft Start, DOL, and STAR/DELTA
- DC, single, and 3-phase versions
- DIN rail mount versions



PANEL METERS

Enjoy clear indication of current, AC and DC voltage or frequency.

- 48, 72, or 96mm square body
- 'No scale' options



TIMERS



Source from our analog and digital timer range, from simple analog wall clocks to digital time switches and hour meters.

COUNTERS



Mechanical counters for counting revolutions, rotations, strokes, and how many times an action has taken place.

Digital counters, including programmable models, for counting electronic operations or changes of state.

— PRODUCT SPOTLIGHT

Soft Starters

Power motors for door and gate drives, pumps, ventilators, fans, and more with the 2-phase starter.

- DC, single, and 3-phase versions
- Adjustable acceleration time, starting voltage, and deceleration
- Ideal for 3-phase motors in star or delta



Unmanaged Ethernet Switches

Manage your industrial Ethernet with these RS PRO DIN-rail mounted switches.

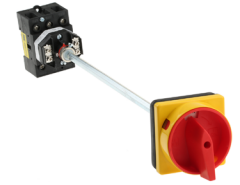
- No software required
- Easy wire removable screw terminal block



Switch Disconnects, 3-Pole

Fit this padlockable, DIN-rail mount switch disconnect for reliable safety isolation of a circuit.

- Non fused
- Handle and shaft included



RS No.	Part No.	Description
73029013	2275223	7.5kW@400Vac, 15A, IP42
73029017	2275227	15.0kW@400Vac, 30A, IP42
73029018	2275229	18.5kW@400Vac, 37A, IP42
73029019	2275230	22kW@400Vac, 45A, IP42
73029021	2275232	30.0kW@400Vac, 60A, IP42
73029022	2275233	37.0kW@400Vac, 75A, IP42
73029010	2275220	55kW@400Vac, 110A, IP42

RS No.	Part No.	Description
71145734	1448673	5 port, 30Vdc, UL/CSA
71121228	1448674	8 port, 30Vdc, UL/CSA
71121229	1448675	5 port, 30Vdc, UL/CSA
71121230	1448676	8 port, 30Vdc, UL/CSA
71964710	1890536	5 port, 12/18/24Vdc, UL/CSA
71964711	1890537	5 port, 12/18/24Vdc, UL/CSA
73029088	2263243	8 port, 30Vdc

RS No.	Part No.	Description
70822693	466273	3 pole, 25A, 750V, IP65, UL/CSA
70822681	466176	3 pole, 32A, 750V, IP65, UL/CSA
70822695	466283	3 pole, 40A, 750V, IP65, UL/CSA
70822694	466277	3 pole, 63A, 750V, IP65, UL/CSA
70822692	466267	3 pole, 80A, 750V, IP65, UL/CSA
70822677	466154	3 pole, 100A, 750V, IP65, UL/CSA
70822678	466160	3 pole, 125A, 750V, IP65, UL/CSA



You need to trust the switches you install to carry out control tasks faithfully, time after time. We have hundreds of RS PRO switches in stock, ready to deliver same day. Explore our complete range to discover the switch for your application.

PUSHBUTTON



- In many illumination colors and current ratings to 20A.
- Round and rectangular versions
 - Many for direct-to-panel mounting
 - Available for protection to IP67

ROCKER



- Current ratings to 20A
- Momentary and On-Off versions
- LED illumination in various colors
- Range includes wall plate switches

TOGGLE

With contact forms to 4PDT and voltage ratings to 250VAC, we can supply any toggle switch your panel or application demands.

- Choose from gold or silver contact materials



SNAP ACTION MICROSWITCHES

Our snap action microswitches switch currents up to 16A and offer a range of actuator types to suit your task: from long lever, to plunger, to button activation.



SLIDE

- Through-hole and panel mount versions
- Various orientations and pin-outs
- On-Off-On options available



Like what you see? There's more!

Check out the complete RS PRO range...see page 18



PRODUCT SPOTLIGHT

Anti-vandal Pushbutton Switches

Ideal for outdoor applications, these 22mm switches are designed to withstand physical attack as well as offer environmental protection up to IP67 depending on the model. UL, cUL, CE.



- Stainless steel construction; silver actuator
- SPDT with quick connect tabs, 5A@250VAC

Miniature Rocker Switches

A great range of SPST (single pole, single throw) rocker switches for panel mounting.



- Choose from 10A or 16A (additional current ratings available)

Miniature Toggle Switches

With ingress protection to IP67, these silver- or gold-contact toggles can be mounted PCB, through-hole, or using solder pins depending on type.



- 20V or 250V options
- On, On-Off, or On-Off-On

RS No.	Part No.	Description
70655662	8118483	On-On, Blue LED 12V@15mA
70655665	8118496	On-On, Blue LED 24V@15mA
70655668	8118503	On-On, Green LED 24V@15mA
70655672	8118519	On-On, Red LED 24V@15mA
70655678	8118538	On-Mom, Blue LED 24V@15mA
70655679	8118540	On-Mom, Green LED 24V@15mA
70655683	8118553	On-Mom, Red LED 24V@15mA

RS No.	Part No.	Description
70791267	273003	On-Off, Red, 10A, 12V, QC
70791272	273312	On-Off, Green, 10A, 12V, QC
70791269	273025	On-Off, Red, 10A, 24V, QC
70791273	419700	On-Off, Black/Red, 16A, 125V, QC
70791274	419726	On-Off, Black, 16A, 125V, Solder
70791280	419754	On-Off, Black, 16A, 125V, QC
70314307	419766	On-Off, Red, 16A, 250V, Solder

RS No.	Part No.	Description
70792039	7346956	PCB, On-Off-(On), DPDT, Through
70792041	7346962	PCB, On-None-On, SPDT, Through
70792043	7346968	PCB, On-None-On, SPDT, Solder
70792045	7346974	PCB, On-None-On, SPDT, Through
70792046	7346978	Panel, On-None-On, SPDT
70792048	7346984	PCB, On-Off-On, SPDT, Through
70792050	7346990	PCB, On-Off, SPDT, Through

Purpose designed for long lasting reliability, RS PRO electromagnetic and solid state relays give you the choice you need, with options for most PLC interfaces, panel builds and other installations.



POWER



- Operating voltages from 12V DC to 240V AC
- Socket mount, solder-in, Octal base, and DIN-Rail mount versions
- Miniature types available

SOLID STATE



Handle switching currents from 10 to 90A with our solid state range. We give you SPST and 3PST switching options and DIN-rail mounting.

TIME DELAY

Initiate actions to take place at a future time, with our single or 3-phase time delay relays.

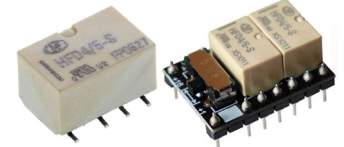
- SPDT and DPDT switching options
- Panel or DIN-Rail mounted



SIGNAL

Obtain low level current switching on PCBs.

- 2 to 20A current handling capacity
- Single, double and changeover versions



REED



Shop from our SPCO and SPNO contact options, with current ratings to 1A.

MONITORING



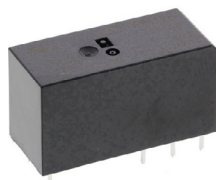
Used to detect abnormal operating conditions in specific systems, this range includes phase/voltage, voltage, and current monitoring relays.

— PRODUCT SPOTLIGHT

PCB Mount Power Relays

Use these PCB mount, through hole power non-latching relays to reliably operate electrical circuits.

- 1 or 2 poles
- Silver alloy contact material
- UL, cUL, VDE



Miniature Power Relays

Save on space with this socket mount general purpose power relay with switching currents up to 16A.

- Single-, double-, 3-, and 4-pole available
- Silver alloy contact material; gold plated contacts
- cUL



DIN Rail Mount Solid State Relays

Here we offer a compact solution without compromising on performance or reliability.

- SPST
- Push-in or Screw Terminals
- LED Indicator



RS No.	Part No.	Description
70791014	476791	DPDT, 8A, 24Vdc, 1440Ω
70654336	8004445	SPDT, 16A, 24Vdc, 400W, 1440Ω
70654339	8004454	DPDT, 8A, 24Vdc, 400W, 1440Ω
70654341	8004463	DPDT, 8A, 24Vac, 750mW, 350Ω
70654342	8004473	SPDT, 16A, 230Vac, 750mW, 32.5kΩ
70654345	8004482	DPDT, 8A, 230Vac, 750mW, 32.5kΩ
70654345	8004489	DPDT, 10A, 12Vdc, 530mW, 275Ω

RS No.	Part No.	Description
71039212	1217807	SP, 16A, 24Vac, 480W, Quick Connect
71039216	1217811	DP, 10A, 24Vdc, 300W, Quick Connect
71039218	1217813	DP, 10A, 110Vac, 300W, Plug-in
71039222	1217817	3P, 10A, 24Vac, 300W, Quick Connect
71039223	1217818	3P, 10A, 110Vac, 300W, Quick Connect
71039226	1217821	4P, 10A, 24Vdc, 300W, Quick Connect
71039229	1217824	4P, 10A, 230Vac, 300W, Plug-in

RS No.	Part No.	Description
71079434	1213885	32V, 6A, Zero Switching, Screw
71079436	1213888	32V, 6A, Zero Switching, Screw
71079439	1213891	32V, 20A, Switching, Screw
71079690	1213892	32V, 20A, Zero Switching, Screw
71079694	1213896	32V, 30A, Zero Switching, Screw
71102930	8886938	24V, 3A, MOSFET, Push-in
71102929	8886934	24V, 5A, MOSFET, Push-in



Specify a sensor from the RS PRO range for presence and condition detection and get a top quality, reliable solution.

Detect and switch using the types shown below, plus explore many more sensor products, from light, flow and vibration sensors to strain gauges, all available on our website.

PHOTOELECTRIC



Through beam, retroreflective, diffuse types available according to process and installation requirements.

- Protection to IP67
- ABS, acrylic, or plated brass

TEMPERATURE



Huge range of platinum resistance and other temperature sensors, plus accessories, connectors and probes, for all installations.

PRESSURE

Pressure sensors and switches for a multitude of applications.

- Measurements from a few mbar to 300 bar



THERMOSTATS

Essential for multiple industrial and domestic environments, from machinery in wholesale food production to home heating systems

- Bimetal, capillary, and mechanical types



PROXIMITY



- PNP, NPN, Hall effect or capacitance
- Thread diameters M8 to M30 plus block types
- Protection to IP68

**Our range...
your choice!**

Find what you need at rspro.com



PRODUCT SPOTLIGHT

Inductive Proximity Sensors

Threaded barrel sensors with both NPN and PNP versions available.

- Shielded
- Flush mounting
- 10-30Vdc supply voltage
- IP67, UL, cUL



Temperature Sensitive Labels

Designed for a range of applications from high voltage switching, motors, cable overheat detection to wave soldering.

- °F and °C versions available.
- Non-reversible



Bimetal Thermostats

Ideal for regulating the temperature inside devices require temperature management like electrical appliances.

- Automatic or manual (73204313) reset versions
- UL, cUL



RS No.	Part No.	Description
70614281	7018238	NPN; M12x1; M12 4-pin conn; 2mm range; 2kHz; 150mA
70614278	7018229	NPN; M12x1; cable conn; 16mm range; 2kHz; 200mA
70614276	7018222	NPN; M18x1; cable conn; 5mm range; 1kHz; 200mA
70614284	7018247	NPN; M30x1.5; M12 4-pin conn; 10mm range; 0.5kHz; 200mA
72251024	2066162	PNP; M18x1; M12 4-pin conn; 8mm range; 1kHz; 200mA

RS No.	Part No.	Description
70637799	285936	150°F-200°F; 6 levels; ~1.25x0.5"
70637801	285958	270°F-320°F; 6 levels; ~1.25x0.5"
70639764	555392	37°C-65°C; 8 levels; 18x51mm
70639765	555409	71°C-110°C; 8 levels; 18x51mm
70639766	555415	116°C-154°C; 8 levels; 18x51mm
70637803	285970	60°C-82°C; 5 levels; 14mm dia.
70637804	285986	88°C-110°C; 5 levels; 14mm dia.

RS No.	Part No.	Description
73204313	2228258	Vert; open@158°F, close@-4°F
73204284	2228226	Vert; open@122°F, close@95°F
73204285	2228227	Horiz; open@140°F, close@113°F
73204286	2228228	Horiz; open@158°F, close@131°F
73204290	2228232	Vert; open@194°F, close@167°F
73204291	2228233	Horiz; open@212°F, close@185°F
73204297	2228240	Vert; open@302°F, close@248°F

CONNECTORS



Often the underrated component in signal and power continuity, connectors perform a vital task to keep systems running.

Choose from our wide connectors range and we'll help you perform any interconnection task your electronic or automation process demands.

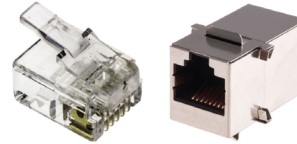


AUDIO & VIDEO



- Comprehensive audio range includes Phono, Jack, XLR, DIN
- Video connectors to suit various applications
- Adapters and patch panels

DATA/ETHERNET/TELECOM



- Wide range of connectors to maintain integrity of data systems.
- RJ45, RJ11, Fiber and many more
 - Solutions for cable, chassis and PCB mount

CIRCULAR

- Range includes all standard configurations
- Cable and chassis mount options
- Types for data, signal and power



D-SUB

- Backshells, contacts, adapters and accessories
- D-Sub, Micro-D and Mini-D
- In stock and ready to ship



COAXIAL/RF



- BNC, TNC, RCA, UHF, Type N and many more types in stock
- Over 70 adapters for connecting in-series and between series

CRIMP TERMINALS



- Choose from our huge range of ferrules, lugs, terminals and kits in many color and size options.

PRODUCT SPOTLIGHT

Ring Terminals

Crimp and connect effortlessly with these high-quality crimp ring terminals in several size and color options.



- Tin plated
- PVC insulated
- 12 to 22 AWG

D-Sub Sockets



Select this high quality, MIL-C approved connector for a range of communication applications.

- 9- to 25-way contacts
- 5A current rating
- Panel mount design

Rectangular Connector Kits

Includes a side or top entry rectangular hood, male and female connector inserts, screw terminated contacts, bottom or right angle bulkhead mounted housing, and cable gland.

- Die-cast aluminum
- 16A, 600V, cable mount
- Description below designates entry "hood"/"bulkhead"



RS No.	Part No.	Description
70639611	534446	M5 (#10) Stud Size; 12-10 AWG; Yellow
70639624	534575	M5 (#10) Stud Size; 16-14 AWG; Blue
71958911	534200	M5 (#10) Stud Size; 22-16 AWG; Red
70639610	534430	M6 (1/4) Stud Size; 12-10 AWG; Yellow
70639623	534569	M6 (1/4) Stud Size; 16-14 AWG; Blue
70639587	534193	M6 (1/4) Stud Size; 22-16 AWG; Red
70639609	534424	M8 (5/16) Stud Size; 12-10 AWG; Yellow

RS No.	Part No.	Description
70645831	5443749	Socket, 9-way, 500V, solder termination
70645829	5443727	Plug, 9-way, 500V, solder termination
70645835	5443783	Socket, 15-way, 500V, solder termination
70645833	5443761	Plug, 15-way, 500V, solder termination
70645839	5443828	Socket, 25-way, 500V, solder termination
70645837	5443806	Plug, 25-way, 500V, solder termination

RS No.	Part No.	Description
74563228	17800024	Size 3A, 4 pos., top/bottom entry
74632940	17800026	Size 3A, 4 pos., top/right angle entry
74632944	17800030	Size 3A, 4 pos., top/top entry
74632943	17800029	Size 3A, 4 pos., side/bottom entry
74563229	17800025	Size 4A, 5 pos., top/bottom entry
74563226	17800022	Size 10B, 11 pos., side/bottom entry
74563225	17800021	Size 16B, 17 pos., side/bottom entry



A clear display of conditions or status is vital for any panel. Pick from our LED indicator range and you gain small size, long life cycle and high energy efficiency.

FLUSH



Wide range of more than 150 flush bezel indicators with many termination choices including QC, lead wire, and solder tab.

- Choice of colors

SNAP-IN/PUSH-IN



Easy to fit snap-in or push-in types offer time savings during installation.

- Prominent, flush, or recessed fit
- Body sizes from 8 to 22mm
- Flashing action available

PROMINENT

Complete range of prominent bezel indicators from 2 to 220V.

- Choice of colors
- Several termination types



THREADED

Choose from our very wide range of popular threaded-bodied LED and neon indicators.

- Available in many colors
- Protection ratings IP30 to IP69



RECESSED



Recessed indicators provide a clean, integrated look when panel space is tight. Choose from several colors with different termination types available.



More than 90,000 quality-tested products!

Find what you need at rspro.com

PRODUCT SPOTLIGHT

8mm LED Indicators

Well suited to a variety of panel applications, these 12 and 24V colored LED indicators offer long life and quick, easy installation.

- Solder tab termination
- 5mm lamp size



16mm Threaded Indicators

Offered in a variety of colors, enjoy easy fitting with the threaded body.

- Fast wiring with screw termination
- Quick, easy installation
- Very low power consumption – very energy efficient



Snap-in LED Indicators

A prominent or recessed indicator with lead wires termination.

- 8mm panel cutout
- 5mm lamp size
- Long life



RS No.	Part No.	Description
70825227	207494	Recessed; Red LED; 12Vdc
70825494	211409	Prominent; Yellow LED; 12Vdc
70825493	211392	Prominent; Green LED; 12Vdc
70825490	211364	Recessed; Green LED; 24Vdc
70824979	203795	Prominent; Red LED; 24Vdc; IP67
70825266	208009	Prominent; Green LED; 24Vdc
70825508	211550	Prominent; Green LED; 24Vdc; IP67

RS No.	Part No.	Description
71039717	9092415	Blue LED; 12V; IP40; panel mount
71039734	9092477	Yellow LED; 24V; IP40; panel mount
71039731	9092468	White LED; 24V; IP40; panel mount
71039726	9092452	Red LED; 120V; IP40; panel mount
71039720	9092427	Blue LED; 120V; IP40; panel mount
71039725	9092446	Green LED; 230V; IP40; panel mount
71039730	9092465	White LED; 230V; IP40; panel mount

RS No.	Part No.	Description
70825242	207769	Prominent; Green LED; 12Vdc
70825173	206839	Prominent; Yellow LED; 12Vdc
70825241	207753	Prominent; Red LED; 12Vdc
70825010	204108	Recessed; Yellow LED; 12Vdc
70825007	204063	Recessed; Red LED; 12Vdc
70825176	206867	Prominent; Green LED; 24Vdc
70825153	206463	Prominent; Yellow LED; 24Vdc

As the power source behind all operations, power supplies and their associated products need to work reliably and as intended.

Here we have over 1,850 power control products ready for installation, designed to provide excellent, long lasting performance.



INVERTERS



DC to AC industrial power inverters from RS PRO are durable and reliable.

- Compact
- Light weight
- Easy to operate

POWER SUPPLIES



- Huge range of output voltages
- Approvals to international standards
- Up to 5 outputs
- Massive range of applications

TRANSFORMERS

With single and multi-output models, RS PRO covers a comprehensive array of PCB mounting, toroidal, chassis and DIN rail mounting transformers.



- Power ratings to 1kVA

EMBEDDED SWITCH MODE POWER SUPPLIES

Get efficient, electronic power conversion using switch mode from our extensive range.



- Multitude of voltage outputs
- Output currents to 26A

BATTERIES



From alkaline to lithium, lead acid to rechargeable, and more, our range, including battery packs and accessories, is ready to order.

FUSES



Choose from our wide range of fuses including automotive, glass and ceramic cartridge, and PCB mounted.

- Current ratings from 0.05A to 400A
- Voltage ratings from 32V to 1500V

PRODUCT SPOTLIGHT

DIN Rail Power Supplies

An input ranging from 100-240VAC enhances these compact, enclosed units, which are ready for direct mounting to 35mm DIN rail.

- Ideal for factory / process control
- Switching



Embedded Switch Mode Power Supplies

Enclosed in a vented metal casing, these models are designed for easy installation.

- Panel mount
- Switching



Fast Acting Cartridge Fuses

- Ceramic range to 20A
- Size 0.25" x 1.25" (6.3x32mm)
- High breaking current (HBC) miniature fuse
- Ideal for a wide range of applications



RS No.	Part No.	Description
71265921	1368301	12VDC; 1.2A; 15W; 100-240VAC Input
71265924	1368305	12VDC; 2.5A; 30W; 100-240VAC Input
71167708	1368303	24VDC; 0.65A; 15W; 100-240VAC Input
71265927	1368310	24VDC; 2.2A; 50W; 100-240VAC Input
71167710	1368315	24VDC; 3A; 70W; 100-240VAC Input
71167711	1368319	24VDC; 5A; 120W; 100-240VAC Input
71265932	1368321	24VDC; 10A; 240W; 100-240VAC Input
71265933	1368322	48VDC; 5A; 240W; 100-240VAC Input

RS No.	Part No.	Description
71291641	1618219	12VDC; 16.7A; 200W; 90-264VAC Input
71291646	1618225	12VDC; 20A; 240W; 90-264VAC Input
71291677	1618260	24VDC; 5.2A; 130W; 90-264VAC Input
71291647	1618226	24VDC; 10A; 240W; 90-264VAC Input
71291650	1618229	24VDC; 13A; 300W; 90-264VAC Input
71291648	1618227	48VDC; 5A; 240W; 90-264VAC Input
71291651	1618230	48VDC; 6.7A; 300W; 90-264VAC Input
71291662	1618242	48VDC; 13.6A; 590W; 90-264VAC Input

RS No.	Part No.	Description
70728996	413204	Quick acting F; 2A; 500V
70824792	420167	Ultra rapid FF; 2A; 700V
70824786	413226	Quick acting F; 5A; 500V
70789373	420189	Ultra rapid FF; 5A; 500V
72005995	2099298	Quick acting F; 16A; 500V
70789378	420230	Ultra rapid FF; 16A; 500V
70789341	2473983	Quick acting F; 20A; 440V
70789338	2473955	Ultra rapid FF; 20A; 500V



Cable assemblies need to last the course. In a commercial or industrial environment they may be subjected to rough treatment and harsh use.

RS PRO cable assemblies are built with quality in mind and offer value and performance built in. We stock a huge choice for all applications.

AUDIO/VIDEO



- Jack, XLR, RCA, HDMI, SCART, Phono, IEEE488, RJ and more
- In-series and cross-series adapters
- CCTV interconnection cabling

COAXIAL



- BNC, TNC, N, SMA/B, MCX / MCXX, FME, UFLE, Ethernet and others
- Connector test boxes available

DVI, HDMI, NETWORK/ETHERNET

- Range of CAT cables including CAT 5, 5e, 6, 6a, 7, and 7a
- DVI and HDMI Cables



D-SUB

Communicate using old and new standards with these D-Sub serial cables. Connect computers to printers, PLCs to HMIs, or input and output modules.



INDUSTRIAL



Selection of assemblies which meet the demands of industry and manufacturing, including the food and beverage industries.

USB



- Connect various electronic devices to charge, transfer data, connect, update, and more.
- USB Type A
 - USB Type B
 - USB Type C

PRODUCT SPOTLIGHT

XLR (F) to XLR (M) Audio/Video Cables

Socket to plug assembly offering a good variety of sheath colors and cable lengths.

- PVC jacket



Cat 5e Male RJ45 to Male RJ45 Assembly U/UTP Ethernet Cables

Patch cable in a selection of colors and lengths.

- Cat 5e stranded cable
- PVC outer sheath



HDMI (M) to DVI (M) Cable Assemblies

Ideal for consumer equipment and available in various lengths, this cable supports uncompressed audio/video in a single cable.

- Fully shielded



RS No.	Part No.	Description
70651269	7424497	3.3ft (1m); 3 pin; PVC; blue
70651267	7424490	3.3ft (1m); 3 pin; PVC; red
70651266	7424488	3.3ft (1m); 3 pin; PVC; black
70651272	7424507	9.84ft (3m); 3 pin; PVC; red
70651268	7424494	9.84ft (3m); 3 pin; PVC; black
70651273	7424510	16.4ft (5m); 3 pin; PVC; blue
70651270	7424501	16.4ft (5m); 3 pin; PVC; black

RS No.	Part No.	Description
70646700	6572090	1.64ft (0.5m); unshielded PVC; gray
70639968	557262	3.3ft (1m); unshielded PVC; red
70640034	557480	3.3ft (1m); unshielded PVC; blue
70642140	4055379	3.3ft (1m); unshielded PVC; gray
70639818	556471	6.56ft (2m); unshielded PVC; blue
70639819	556477	9.84ft (3m); unshielded PVC; blue
70639930	557036	9.84ft (3m); unshielded PVC; black

RS No.	Part No.	Description
71908712	1828878	3.3ft (1m); single link; high speed; 4K
73507338	2369113	4.9ft (1.5m); dual link; 1080
72304718	1828879	6.6ft (2m); single link; high speed; 1080
71844888	1828569	9.84ft (3m); dual link; 1920x1200
71880218	1828570	16.4ft (5m); dual link; 1920x1200
71880219	1828571	23ft (7m); dual link; 1920x1200
71880220	1828572	33ft (10m); dual link; 1920x1200

Automation systems depend on the reliability and longevity of the wiring. It carries the power and signals to make it work. Check the extent of our wire and cable portfolio and you'll find products for most installations, all available when you need them.



HOOK-UP WIRE



Low voltage, low current application wire with a single solid or stranded conductor.

- Several sheath colors available
- 7- to 32-core versions
- Many to UL specification/Approval

THERMOCOUPLE WIRE



Our selection includes Types E, J, JX, K, KX, N, S, T, TX, and U in varying lengths as well as RTD. Choose from the wide range of thermocouple wire available.

COAXIAL CABLE

Durable, easy to install cable, designed to transmit signals over long distances.

- Options for shielding, stranding, size, and insulation material available



MULTICONDUCTOR CABLE

Offering clear advantages over discrete conductors or hook-up wire.

- PVC and CPE jackets available
- Wide range of colored sheaths
- LSZH types



FIBER OPTIC CABLE



Use for high-speed internet connections, telecommunications, and networking as these fiber optic cables are not susceptible to EMI or RFI.

- Low latency for real-time data transmission

FLAT (RIBBON) CABLE



Used in electronic systems that require multiple data buses to link internal peripherals.

- Number of conductors available range from 10 to 68

— PRODUCT SPOTLIGHT

Hook-Up Wire

Versatile stranded hook-up wire with a PVC insulation.

- Range of colors
- 18, 20, 22 AWG
- Tinned Copper
- UL1569



Flat Ribbon Cables

The cost-effective solution for simple mass termination. Unscreened cable consisting of seven parallel stranded tinned copper conductors laminated between gray PVC film.

- 28AWG
- Other sizes and number of conductors available



Thermocouple Wire

Rely on high-quality thermocouple wiring to produce reliable temperature readings in a range of applications including extreme environments.

- Various thermocouple types and lengths available



RS No.	Part No.	Description
72421427	2075299	328ft (100m); 18AWG; 16x0.25mm; black
72421428	2075300	328ft (100m); 18AWG; 16x0.25mm; red
73389155	2075301	328ft (100m); 20AWG; 10x0.25mm; black
72421429	2075302	328ft (100m); 20AWG; 10x0.25mm; white
72423030	2075303	328ft (100m); 22AWG; 7x0.25mm; black
72643215	2075305	328ft (100m); 22AWG; 7x0.25mm; green
73504112	2075307	328ft (100m); 22AWG; 7x0.25mm; white

RS No.	Part No.	Description
71610139	2899896	20 way, 1"x16ft (25.4mm x 5m)
70954302	360093	10 way, 0.5"x98ft (12.7mmx30m)
71610181	360116	16 way, 0.8"x98ft (20.3mm x 30m)
71610182	360122	20 way, 1"x98ft (25.4mm x 30m)
71610183	360138	24 way, 1.2"x98ft (30.5mm x 30m)
71610185	360150	26 way, 1.3"x98ft (33mm x 30m)
71610189	360201	50 way, 2.5"x98ft (63.5mm x 30m)

RS No.	Part No.	Description
70641738	2363921	Type JX; PVC; 82ft (25m)
70643872	3971589	Type K; PFA; 3.3ft (1m)
72200871	4071501	Type K; stainless steel braid; 82ft (25m)
70641733	2363864	Type KX; PVC; 82ft (25m)
70646453	6212136	Type N; fiberglass; 3.3ft (1m)
74128165	4334199	Type S; silicone rubber; 82ft (25m)
70657147	8275823	RTD; silicone rubber; 32.8ft (10m)



Install well-chosen products to organize and protect cables and improve their performance and life span. Organizing and protecting cables correctly can also reduce maintenance time and repair costs. Additionally, a key benefit is the improvement to health and safety in the work environment.

CABLE TIES



In nylon, stainless steel, or fabric, we have a cable tie for all applications.

- Colored versions to aid identification
- Stainless steel in plain or coated

CABLE TIE MOUNTS

Use cable tie mounts in self-adhesive, screw mount or push-in to ease the task of securing cable ties to equipment or components.

- Range of materials, sizes, and colors available



CABLE CLAMPS AND CLIPS



Secure cables with the right clamps and clips to improve performance, extend life span, and reduce maintenance time.

- Clips for single cables and multiple cable runs

CONDUIT FITTINGS & ACCESSORIES

Safely and efficiently protect cabling and wiring with RS PRO Choose from a range of diameters, lengths, material, and color.



LIQUID TIGHT STRAIN RELIEFS



Prevent cable pull-out and maintain IP rating.

- Available in nylon, brass or plastic
- Black, white, gray or red
- Flame retardant versions available

HEAT SHRINK

Supplied in Polyolefin, PEX or fluoropolymer, our heat shrink products aid abrasion resistance, and protect joints.



SLEEVES AND TUBING



Protect cabling from abrasion and wear.

- Sleeving in PVC, PTFE, PET, nylon, and rubber
- Expandable braided types allow for future cabling

WIRE DUCT

Slotted wire duct from RS PRO is available in several colors and sizes and includes the cover.

- Cover included



PRODUCT SPOTLIGHT

Non-Releasable Cable Ties

Great for bundling and securing cables and wires.

- UL approved nylon 6.6
- Supplied in packs of 100



RS No.	Part No.	Description
70637490	233455	3.94 x 0.1" (100x2.5mm), black
70637493	233465	5.9 x 0.14" (150x3.6mm), black
70637497	233487	11.8 x 0.2" (300x4.8mm), black
70637496	233483	14.5 x 0.2" (368x4.8mm), black

Liquid Tight Strain Reliefs

- Simple, easy to use
- PG threaded with washer
- IP68
- UL94V-2



RS No.	Part No.	Description
70656158	8229640	PG7, 3.5-6mm cable dia range
70656159	8229644	PG9, 4-8mm cable dia range
70656162	8229653	PG11, 5-10mm cable dia range
70656163	8229656	PG13.5, 6-12mm cable dia range

Heat Shrink Tubing Kit

Containing a selection of colors and lengths, provides 170 pieces of flame retardant heat-shrink tubing.

- 2:1 and 3:1 shrink ratio
- Storage box included

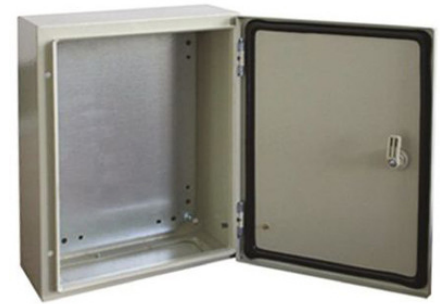


RS No.	Part No.	Description
71201462	397679	Assorted Colors/Lengths; 2:1/3:1; Polyolefin; 170 Piece

ENCLOSURES



Store, house, and protect control equipment with an enclosure from the extensive RS PRO range. Commonly constructed of steel, stainless steel, or plastic, we have sizes, materials, and IP protection ratings to suit any panel or installation.



ALUMINUM



Lightweight alternative to steel giving you high strength and superb corrosion resistance.

- Dust/water protection to IP67
- High impact rating over non-metal

ABS



- Suitable for a variety of applications
- IP65 or IP67 protection, depending on model
- Available in a range of sizes

PUSHBUTTON

Designed to accommodate a wide variety of pushbuttons and control station switches for durable and secure protection for industrial environments.



RACKMOUNT

Precise design and high-quality manufacturing enables fast and easy assembly while offering compatibility with all 19-inch standard equipment



STEEL



The optimal choice where strength and cost-effectiveness are key requirements.

- Wall boxes in a choice of sizes
- Strong with high impact resistance

STAINLESS STEEL



The top choice for strength, impact and corrosion resistance, in 304 or 316 stainless steel with protection ratings to IP69K.

— PRODUCT SPOTLIGHT —

IP66 Aluminum Enclosures

Powder coated and watertight, we bring you an excellent solution for harsh, demanding industry applications.

- Neoprene O-ring
- DIN rail mounting point



IP65 ABS Wall Boxes

Sturdy, gray wall box purpose designed for outdoor applications and harsh environments. Gives an attractive, high gloss finish to installations.

- Galvanized steel backplate



304 Stainless Steel Boxes

An unpainted wall / junction box with locking, hinged door. Box includes chassis plate and offers high protection against mechanical impacts.



RS No.	Part No.	Description
70651728	7608995	9.8x3.1x2.5" (250x80x64mm), with lid
70651729	7608998	6.9x3.1x2.2" (175x80x57mm), with lid
70651720	7608967	5x5x3" (127x127x76mm), with lid
70651719	7608963	4.9x3.1x2.2" (125x80x57mm), with lid
70651725	7608985	3.9x3.9x3.2" (100x100x81mm), with lid
70651723	7608979	3x3x2" (76x76x51mm), with lid
70658082	8462945	2x1x2" (51x25x51mm), with lid

RS No.	Part No.	Description
71816144	7696131	31.5x23.6x10.2" (800x600x260mm), IP65
70827088	7696122	24x20x9" (610x508x229mm), IP65
70827089	7696128	20x14x8" (508x356x203mm), IP65
70651462	7467396	16x12x6" (400x300x165mm), IP65
70652017	7696125	13x10x5" (330x254x127mm), IP65
70651461	7467393	11x8x5" (280x210x130mm), IP65

RS No.	Part No.	Description
70792209	8428403	20x16x10" (500x400x250mm), IP66
70792210	8428409	16x16x8" (400x400x200mm), IP66
70792212	8428425	14.7x14.7x5.91" (360x360x150mm), IP66
70792203	8428370	11.81x11.81x7.87" (300x300x200mm), IP66
70657922	8428406	11.81x11.81x5.91" (300x300x150mm), IP66
70657924	8428419	9.45x9.45x5.91" (240x240x150mm), IP66
70656455	8428399	7.87x7.87x5.91" (200x200x150mm), IP66



Quality tools leads to quality work. Using the correct tools for the job will help achieve better results and get the job done faster. We supply a vast range of tools from screwdrivers, to measuring tools, to welding accessories, wire wrapping and a wide range of power tools.

CRIMPING TOOLS



A secure and safe termination is vital to maintain reliability.

- Basic tooling to high-end ratchet/hydraulic types
- Tools for all wire sizes and terminal types

CUTTERS



With our extensive selection of more than 150 cutting tools, we can support all of your assembly and maintenance work.

- From micro PCB work to heavy duty bolt and pipe cutters

HEX KEY SETS

- Imperial and metric sizes available
- L-shape and T-shape versions
- Available as sets or individually



PLIERS

Long nose, bent nose, combination, and flat nose pliers represent our extensive range, including specialist tools for specific tasks such as revolving punch pliers and circlips.

- Tools for all wire sizes and terminal types



SCREWDRIVERS & NUTDRIVERS



All screw and nut types with drivers from miniature Jewellers' types to insulated 1,000V VDE approved tools and hex sets.

- Slotted, cross recess, hexagon recess, Torx

TOOL KITS



- Small driver sets to fully fitted engineers' kits
- Nut driver to hole saw to socket and plier sets
- All panel building requirements

VDE TOOLS

Wide range of screwdrivers, cutters, pliers, and tool sets approved for high voltage working.



WIRE STRIPPERS

Cleanly and safely strip cable or wire insulation to be ready for termination.

- Single action tools to multi-aperture automatic types
- Tools for coaxial and fiber optic cable work



PRODUCT SPOTLIGHT

5-Piece Plier Set

Multipurpose set to aid installation and repair work.

- Side cutters, and long nose, flat nose, bent nose, and end nipper pliers



7-Piece Screwdriver Set

Ideal for electronics work.

- Flat blade: 1.5 x 50mm, 2.5 x 50mm, 3 x 50mm, 3 x 100mm
- Philips: PH00 x 60mm, PH0 x 60mm, PH1 x 80mm



Crimping Plier for Scotchlok™ Connectors

For use with gel-filled splices and manufactured from high-quality materials. Easy to use and provides even pressure for a quality finish.



RS No.	Part No.	Description
71174770	8473819	CR-V steel head; high carbon steel with TPR grip; polished

RS No.	Part No.	Description
70411943	243513	Chrome steel, slotted and Phillips, with rotating cap

RS No.	Part No.	Description
75115419	29360002	32-17 AWG, soft PVC grip handles; ideal for Scotchlok™ connectors

TEST METERS



Arm yourself for the testing and fault finding process with an extensive selection of RS PRO test meters. All offer value and are designed to be easy to use.

Accessory products and leads are also available online.



MULTIMETERS



Superb value-for-money models to high-end and feature packed.

- Current clamp options available
- All have clear LED readout

CLAMP METERS



A great range of fixed jaw or operated jaw clamps allowing closed circuit testing of many electrical parameters.

- 3-phase handling on some models

LCR METERS

Gain highly accurate measurements on the bench or hand-held with our high quality meters.

- All bench models have RS232C interface
- A range of specifications to match your budget



HANDHELD MILLIOHM METER

Ideal for measuring low resistance at high precision to verify the value of an electrical circuit.

- 3-1/2 digit LCD display
- Low battery indication



TEST METERS



High quality, cost-friendly options. Choose from a large range of tester types including light meters, tachometers, anemometers, and more.

TESTERS



This range includes sensor testers, network cable testers, and voltage indicators along with other handheld options.

PRODUCT SPOTLIGHT

True RMS Clamp Meters

Hall Effect technology and nickel steel alloy jaws give you precise measurement of AC and DC current.

- Ideal for factory / process control tasks
- 3 year warranty



Handheld Digital Multimeters

These compact DMMs are a great value, offering a tough outer casing and clear read-out.

- 2000 count LCD display (1469085 - 4000 count)
- 3 year warranty



Voltage Testers

Simple voltage indicators and testers giving you test of AC and DC voltage, continuity, resistance, frequency, phase, and more.

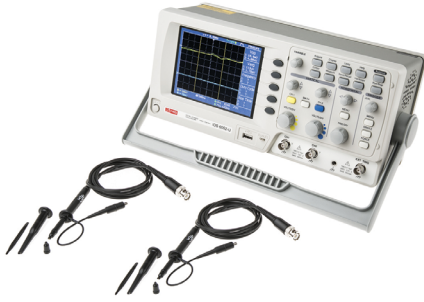
- Continuity check
- Battery powered
- 3 year warranty



RS No.	Part No.	Description
70979150	1233222	600A, CAT II 1000V, CAT III 600V, 250 Hr
71079717	1233225	1000A, CAT III 1000V, CAT IV 600V, 300 Hr
71079718	1233227	1000A, CAT III 1000V, CAT IV 600V, 300 Hr
71079720	1233229	600A, CAT III 600V, 300 Hr
70979135	1233252	300A, CAT II 600V, CAT III 300V, 100 Hr

RS No.	Part No.	Description
70979143	1231939	60Hz, 2mOhms, CAT III 600V, 10A
70979144	1231938	60Hz, 20mOhms, CAT III 600V, 10A
71018603	1233237	20mOhms, CAT II 1000V, CAT III 600V, 1.5mA
71079723	1233238	20MHz, 20mOhms, 2mF, CAT II 1000V, CAT III 600V, 10A
71785819	1469085	10kHz, 40mOhms, 4mF, CAT II 1000V, CAT III 600V, 10A

RS No.	Part No.	Description
71386780	1241961	LED, 750Vac/dc, CAT III 750V, CAT IV 600V, IP65
71386781	1241962	LCD, 750Vac/dc, CAT III 750V, CAT IV 600V, IP65
72310525	2017830	LED, 999.9Vac/dc, CAT III 1000V, CAT IV 600V, IP65
72310575	2050093	LED, 600Vac/dc, CAT III 1000V, CAT IV 600V, IP64



Workshop fault diagnosis demands the best tools for your money. We bring you an expansive range of bench test and measuring instruments used in electrical, electronic and panel building work. All offer great value, ease of use and reliability.

OSCILLOSCOPES



Bench-top and handheld digital storage oscilloscopes which offer comprehensive testing even in the field.

- 2- and 4-channel

SIGNAL GENERATORS



Arbitrary and function waveform generators to suit requirements from basic to high end. 1- and 2-channel models available.

OHMMETERS

Bench-mounted, high-end ohmmeters, most with USB, RS232C, and GPIB interfaces. All offer very low resistance measurement.



POWER SUPPLIES

Bench-mounted models all offering stable DC voltage in 1, 2 or 3 channel outputs.

- Up to 0-80V voltage output
- Up to 72A current output



BENCH MULTIMETERS



- Up to 120,000 count
- USB data storage capability
- Up to 12 measurement functions

**Our range...
your choice!**



Find what you need at rspro.com

PRODUCT SPOTLIGHT

Digital Storage Oscilloscopes

The 256 color gradient display function shows waveform details in gradients while measuring fast-changing analog signals.



- Visual persistence technology (VPO)
- 1 GSa/s maximum sampling rate
- 7", 800 x 480 WVGA LCD display
- 3 year warranty

Arbitrary Waveform Function Generators

These generators use direct digital synthesis (DDS) to generate signals at precise frequencies.



- Variable sweep
- 20 MSa/s sampling rate
- LCD display
- 3 year warranty

Dual Measurement Multimeters

These multimeters provide measurement precision, comprehensive data observation and the convenience of PC connection with this 50,000 count VF-display instrument.



- 0.02% DCV basic accuracy
- 3 year warranty

RS No.	Part No.	Description
71176835	1233540	50MHz, 4 Channel, US/UK/EU Cords
71176836	1233541	70MHz, 2 Channel, US/UK/EU Cords
71176839	1233544	70MHz, 4 Channel, USB, US/UK/EU Cords
71176837	1233542	100MHz, 2 Channel, USB, US/UK/EU Cords
71176838	1233543	100MHz, 4 Channel, USB, US/UK/EU Cords

RS No.	Part No.	Description
71176827	1233529	5MHz, 1 Channel, USB, US/UK/EU Cords
71176828	1233530	12MHz, 1 Channel, USB, US/UK/EU Cords
71176829	1233531	5MHz, 1 Channel, USB, US/UK/EU Cords
71176830	1233532	12MHz, 1 Channel, USB, US/UK/EU Cords
71176831	1233533	25MHz, 1 Channel, USB, US/UK/EU Cords

RS No.	Part No.	Description
71512335	1233535	1MHz, 50mOhms, 50µF, 10A; with capacitance measurement
71512337	1233536	1MHz, 50mOhms, 50µF, 10A; with capacitance measurement, temperature measurement, USB storage

Circuit Breakers, Fuses & Protection

- Circuit Breakers
- Filters
- Fuse Accessories
- Fuse Kits
- Fuses
- GFI Protection
- Surge Protection Devices

Connectors

- Application Specific
- Audio, Video & Accessories
- Automation
- Board Level (PCB)
- Circular
- Coaxial/RF
- D-Sub Connectors, Contacts & Accessories
- Data/Ethernet/Telecom
- Electrical/Mains
- IC Sockets, Plugs & Adapters
- Rectangular
- Spring Probes, Test Connectors & Adapters
- Terminal Blocks & Strips
- Terminals, Lugs & Ferrules

Development Tools

- 3D Printer Filament & Accessories
- PCB & Prototyping Boards

Electronic Components

- Capacitors
- Computing
- Crystals & Oscillators
- EMI/RFI Shielding/Suppression
- Fiber Optic Products
- Inductors
- LEDs
- Passive Accessories & Kits
- Potentiometers
- Power Entry Modules (PEM)
- Resistors
- RF Products
- Thermistors
- Varistors (MOV)
- Video Splitters & Multiplexers

Enclosures, Racks & Cabinets

- Cabinet & Rack Parts/Accessories
- Cabinets & Racks
- Electrical Enclosure Accessories
- Electrical Enclosures
- Electronic Enclosure Accessories
- Electronic Enclosures
- Pushbutton Enclosures
- Travel and Brief Cases

Facilities, Cleaning & Maintenance

- Cleaning Supplies
- ESD Products
- Facility Security
- HVAC
- Ladders & Steps
- Office Supplies
- Public Address & Audio Products
- Safety & PPE
- Workshop Equipment & Storage

Fans & Thermal Management

- Blowers
- Electric Heaters
- Equipment Fans
- Fan & Blower Accessories
- Fan Guards
- Filter Fans
- Grilles
- Heatsinks
- Industrial Fans
- Peltier Modules
- Space Heaters & Radiators
- Thermal Pads

Industrial Controls

- Contactors & Accessories
- Control Stations
- Controllers & Accessories
- Counters, Electronic/Mechanical
- Disconnect Switches
- Panel Meters
- Signal Conditioning & Converters
- Solenoids & Solenoid Accessories
- Timers

Industrial Data Communications

- Ethernet Switches
- Media Converters

Lighting & Indication

- Audibles/Buzzers
- Ballasts
- Beacons
- Flashlights & Work Lights
- Lamp Sockets
- Lamps (Light Bulbs)
- Lenses
- Light Towers, Components & Accessories
- Lighting Products
- Panel Mount Indicators

[More categories »](#)

RS PRO is your smart choice

A combination of quality, choice and value for industrial supplies.

Choose RS PRO for:

- Industrial-grade quality across every product
- A low returns rate of less than 0.02%
- A 3-year warranty across most products*
- More than 90,000 products across 1,500 technologies
- Combining components into integrated solutions
- All with competitive pricing – providing savings against branded alternatives

*All appliances and tools.



QUALITY

The RS PRO Seal of Approval is only awarded after a rigorous quality process to demanding international standards.



CHOICE

With thousands of quality products and solutions to choose from, RS PRO has the largest offering in the industry making purchasing practices easier.



VALUE

We provide customers with one brand they can trust, with the quality and price they expect and a growing choice of sustainable products and solutions.

Mechanical Power Transmission

- Bearings
- Belts & Pulleys
- Bushings
- Couplings
- Gearing & Gear Racks
- Linear Motion
- Rod Ends
- Roller Chains & Accessories
- Shaft Collars, Shaft Blocks & Seals
- Sprockets

Motors & Motor Controls

- AC Drive Accessories
- AC Drives
- DC Motor Controllers
- Gearmotors
- Motor Accessories
- Motor Protection
- Motor Starters
- Motors
- Overloads
- Soft Starters

PLCs & HMIs

- HMI Displays
- Industrial Monitors
- PLC Expansion Modules
- Smart Relays

Pneumatics & Fluid Control

- Air Prep/Treatment
- Fitting Accessories
- Fittings
- Flow Controls/Speed Controls
- Hydraulics
- Instrumentation
- Pipeline & Plumbing
- Pneumatic Actuator Accessories
- Pneumatic Actuators
- Pneumatic Mufflers/Silencers
- Pumps & Pump Accessories
- Tubing/Hoses
- Valves

Power Products

- Accessories, Power Supplies
- Batteries, Chargers & Accessories
- Power Supplies, AC-DC
- Power Supplies, DC-AC (Inverter)
- Power Supplies, DC-DC (Converter)
- Solar Charger/Inverter
- Solar Panels
- Transformers

Relays

- Accessories
- Industrial Optocouplers
- Monitoring
- Power
- Reed
- Relay Modules
- Signal
- Solid State
- Time Delay

Sensors

- Accessories
- Barcode Readers
- Current Transducers
- Encoders
- Flow
- Fork/Slot
- Hall Effect
- Linear Transducers
- Liquid Level
- Load Cells
- Magnetic Pickups
- Photoelectric
- Pressure
- Proximity
- Temperature
- Thermocouple & Probe Accessories
- Thermocouples
- Thermostats
- Vibration

Switches

- Accessories
- Basic Snap Action
- DIP
- Emergency Stop
- Float
- Foot
- Joystick
- Keylock
- Limit
- Magnetic & Reed
- Pushbutton
- Rocker
- Rotary
- Selector
- Slide
- Tactile
- Toggle
- Touch

Test & Measurement

- Accessories
- Analyzers
- Calibrators
- Datalogging & Acquisition
- DC Electronic Loads
- Inspection Scopes
- Meters & Multimeters
- Oscilloscopes
- Power Supplies, Benchtop
- Probes
- Signal Generators
- Testers
- Thermometers

Tools & Hardware

- Connector & Crimp Tooling
- Engineering Materials
- Hardware & Fasteners
- Soldering
- Tapes
- Tool Accessories & Parts
- Tools

Wire & Cable

- Cable
- Cable Assemblies
- Cable Management
- Labeling
- Wire

BROWSE THE RS PRO BETTER WORLD OFFERING

Discover products that represent a greener choice.

We are continuously striving to enhance our offering, introducing a broader spectrum of sustainability improvements to create a positive change for our customers and our planet.





AUDITED

In compliance with industry standard



INSPECTED

By leading engineers



TESTED

For guaranteed quality and performance

RS PRO products are audited against demanding international standards, inspected for durability and consistency and tested by leading engineers.

Only when products have been through this process they are awarded our seal of approval, demonstrating quality that can be trusted. Confidence in this process is reflected in our long product warranties - proof that our products will consistently deliver the quality you expect for a long time to come.



RS Americas
7151 Jack Newell Blvd. S.
Fort Worth, Texas 76118
800.433.5700
us.rs-online.com

© RS Americas, Inc, 2025. All rights reserved.

rspro.com